

Söll MultiRail®

- Horizontal anchor device
- Certified according to EN 795: 01 and CEN/TS 16415:2013



Söll MultiRail®

Horizontal safety rail

- Available in lengths of 00 - 6,000 mm
- Mounting distance: recommended 4,000 mm - max. 6,000 mm

Material: Stainless steel, pickled

Weight: 2.7 kg/m

Part no. 17488

Standard length 3,000 mm

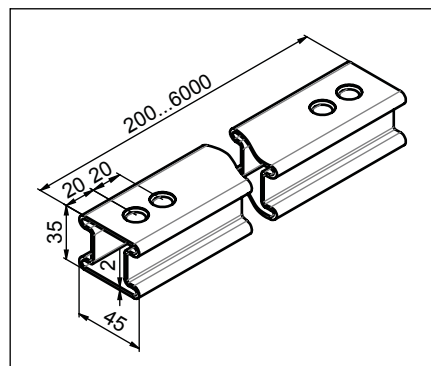
Weight: 7.9 kg/each

Part no. 24401

Standard length 6,000 mm

Weight: 16.1 kg/each

Part no. 19146



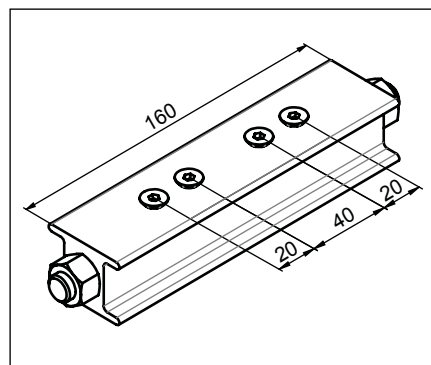
Connector

- For connecting individual rail sections

Material: Anodised aluminium

Weight: 0.5 kg/each

Part no. 17332



Rail end-stop without exit

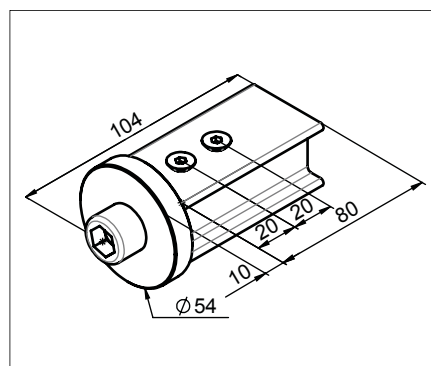
- To prevent the glider from coming off accidentally

Material: Stainless steel, pickled/

Anodised aluminium

Weight: 0.4 kg/each

Part no. 17404



Rail end-stop with exit

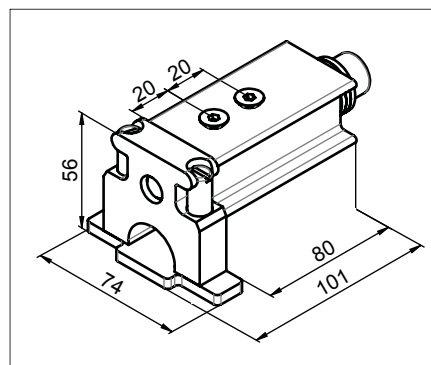
- To prevent the glider from coming off accidentally
- Removal of the glider by pressing the opening mechanism with one hand

Material: Stainless steel, pickled/

Anodised aluminium

Weight: 0.4 kg/each

Part no. 23956



Söll MultiRail®

Horizontal bend

- For horizontal use as corner turn
- R = 80 mm

Material: Anodised aluminium

Angle: 90°

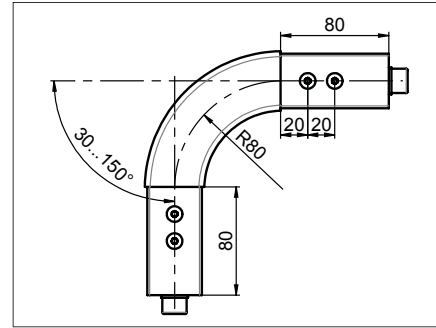
Weight: 0.9 kg/each

Part no. 17331

Angle: 30 - 150°

Weight: Depends on angle

Part no. 18311



Vertical bend

- For vertical use as corner turn
- R = 80 mm

Material: Anodised aluminium

Angle: 90°

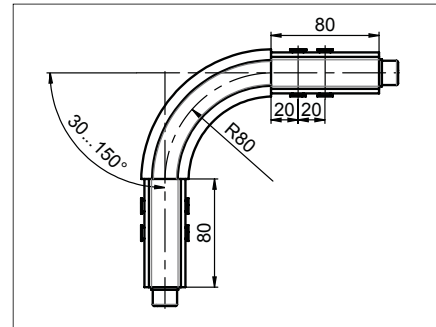
Weight: 0.9 kg/each

Part no. 17330

Angle: 30 - 150°

Weight: Depends on angle

Part no. 18999



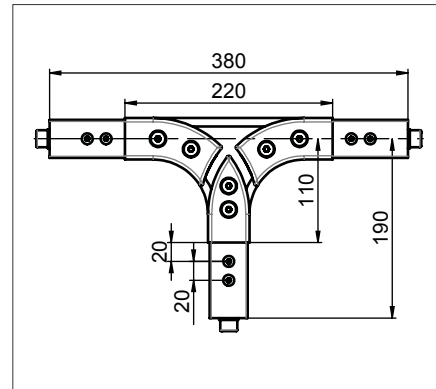
Horizontal track change

- For safe change of travel in two directions
- The rails must be at a 90° angle to one another
- Can only be used with glider closed (part no. 17407)

Material: Stainless steel, pickled / Anodised aluminium

Weight: 2.7 kg/each

Part no. 20449



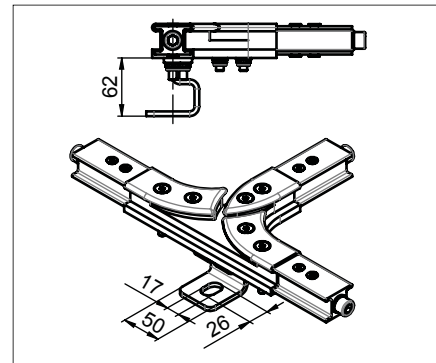
Horizontal track change with bracket

- For safe change of travel in two directions
- The rails must be at a 90° angle to one another
- Can only be used with closed glider (part no. 17407)
- To be used when the anchor point to the structure is right under the track change
- Installation possible in combination with bracket 1 (part No. 17489)

Material: Stainless steel, pickled/ Anodised aluminium

Weight: 3.2 kg/each

Part no. 21967



Summary of the smallest possible bending radii in mm for the Söll MultiRail®

Bent safety rail

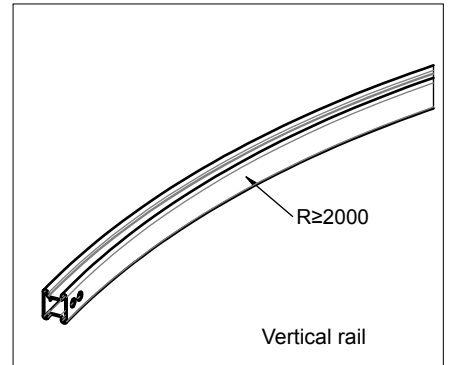
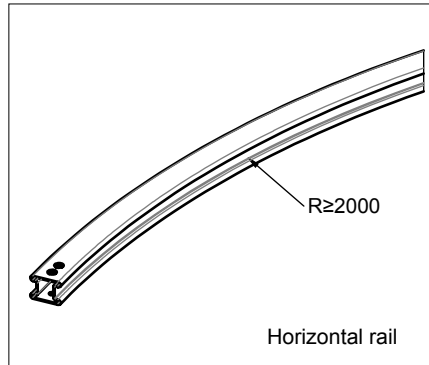
- Bending radius is at least 2000 mm

Material: Stainless steel, pickled

Weight: 2.7 kg/m

Part no. 18269

Indicate the position of the rail (horizontal, vertical) when ordering.



Single bending

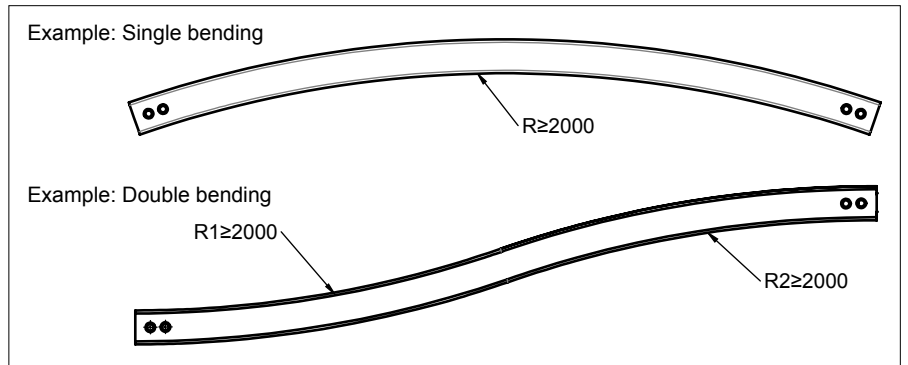
- Bending radius: min. 2000 mm

Part no. 18270

Double bending

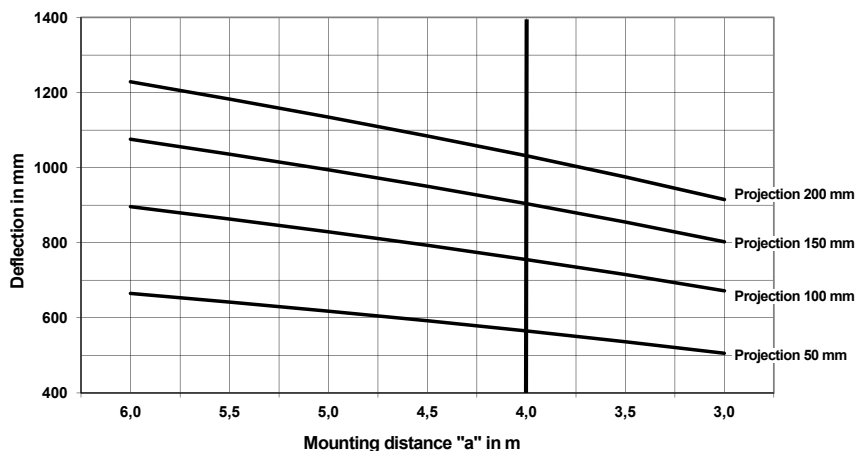
- Bending radius: min. 2000 mm

Part no. 23177



Deflection of the guide rail for the Söll MultiRail®

The deflection depends on the mounting distance 'a' and the projection of the rail:

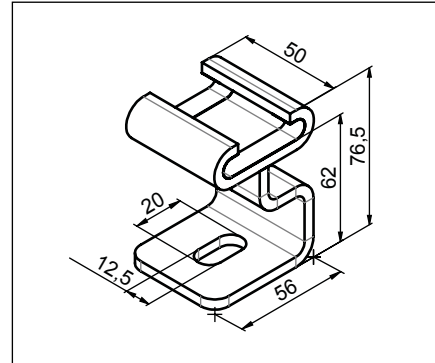


Söll MultiRail® Fixings

Bracket 1

- With Teflon easy-slide ribbons
- The rail can move freely in the brackets
- For mounting screws M1
- Screw mounting surface parallel to the rail

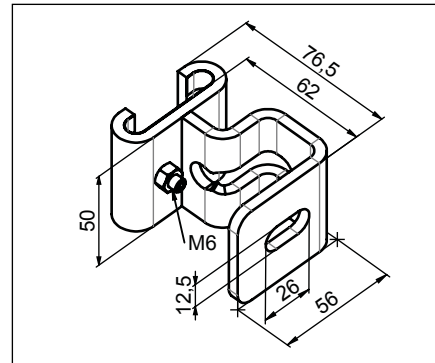
Material: Stainless steel,
pickled
Weight: 0.4 kg/each
Part no. **17489**



Bracket 1 with clamping screw M6

- With Teflon easy-slide ribbons
- For mounting screws M1
- Screw mounting surface parallel to the rail

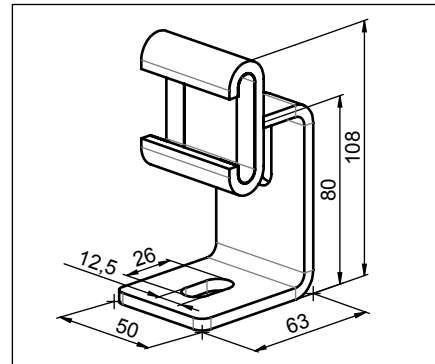
Material: Stainless steel,
pickled
Weight: 0.4 kg/each
Part no. **20168**



Bracket 2

- With Teflon easy-slide ribbons
- The rail can move freely in the brackets
- For mounting screws M1
- Screw mounting surface at right angle to the rail

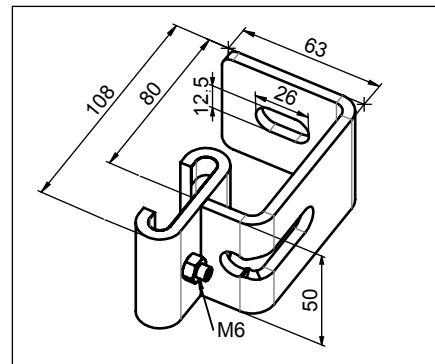
Material: Stainless steel,
pickled
Weight: 0.4 kg/each
Part no. **17112**



Bracket 2 with clamping screw M6

- With Teflon easy-slide ribbons
- For mounting screws M1
- Screw mounting surface at right angle to the rail

Material: Stainless steel,
pickled
Weight: 0.4 kg/each
Part no. **20167**



Söll MultiRail® Fixings

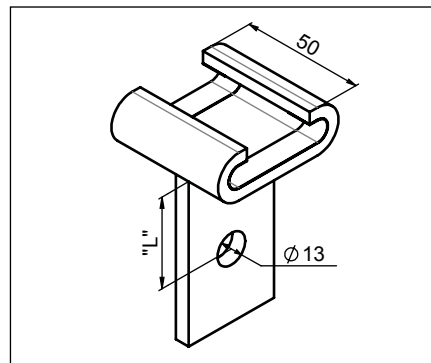
Bracket 5

- With Teflon easy-slide ribbons
- The rail can move freely in the brackets
- For overhead application
- For work in suspension
- For mounting screws M1
- Projection 'L': max. 00 mm (please indicate when ordering)

Material: Stainless steel,
pickled

Weight: 0.4 kg/each

Part no. **21031**



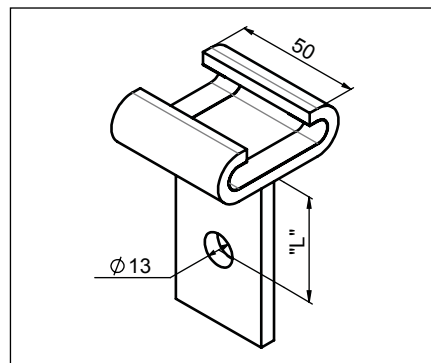
Bracket 7

- With Teflon easy-slide ribbons
- The rail can move freely in the brackets
- For overhead application
- For work in suspension
- For mounting screws M1
- Projection 'L': max. 00 mm (please indicate when ordering)

Material: Stainless steel,
pickled

Weight: 0.4 kg/each

Part no. **21677**



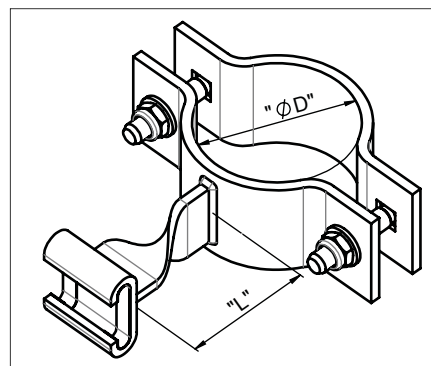
Clamp

- With Teflon easy-slide ribbons
- The rail can move freely in the brackets
- Projection 'L': 80 - 00 mm
- Complete with all mounting elements
- Please indicate projection 'L' when placing the order

Material: Stainless steel,
pickled

Weight: Depends on size

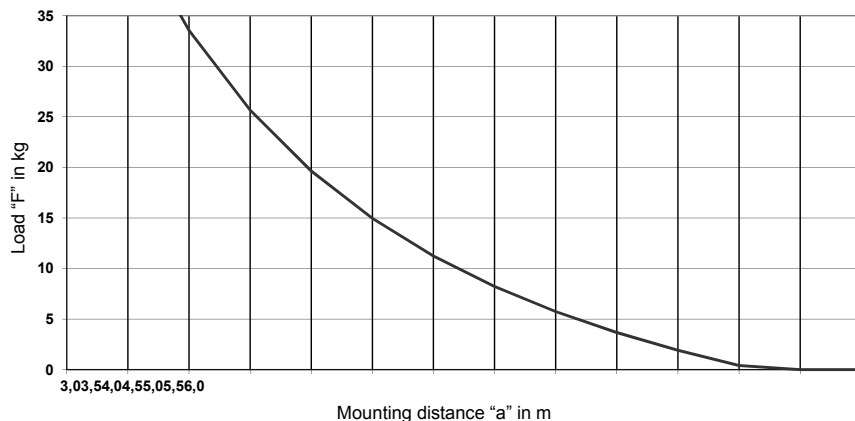
Part no. **MR-BS-1AUSL-<Ø in mm>**



Recommended mounting distance 'a'
when using a wheeled trolley with a
retractable type fall arrester

Load 'F' definition:

self-weight of retractable type fall
arrester +
max. retraction load of the retractable
type fall arrester



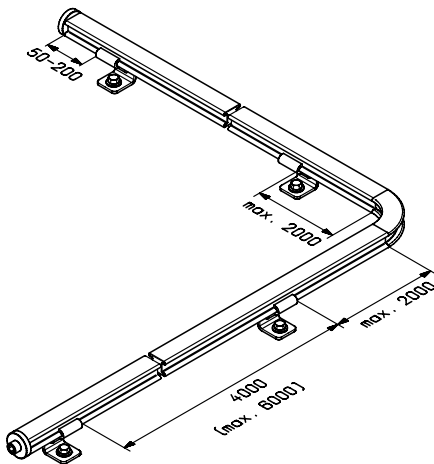
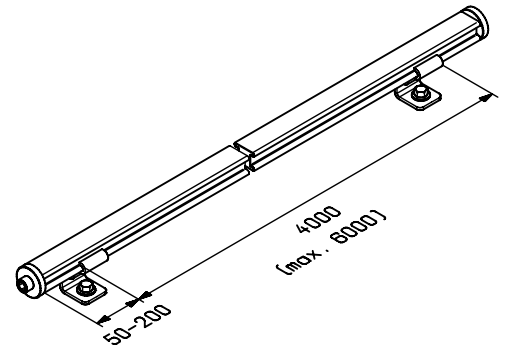
Söll MultiRail®

Planning aid for mounting distances

Straight course of the Söll MultiRail anchor device:

Rail projection at the last bracket: 50 - 200 mm

Mounting distance: Recommended 4,000 mm
 Maximum 6,000 mm



L-shape of the Söll MultiRail anchor device: Distance of bracket to bend: max. 2,000 mm

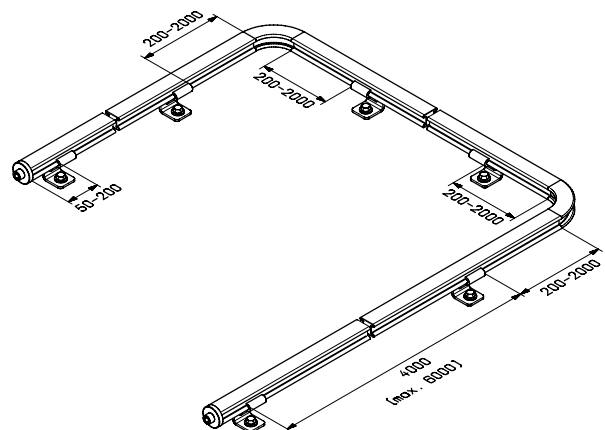
Special shapes available after consulting the manufacturer

U-shape of the Söll MultiRail anchor device:

Distance of bracket to bend: 200 - 2,000 mm

Special shapes available after consulting the manufacturer

Endless/closed shape of the Söll MultiRail anchor device available only as an exception and after consulting the manufacturer



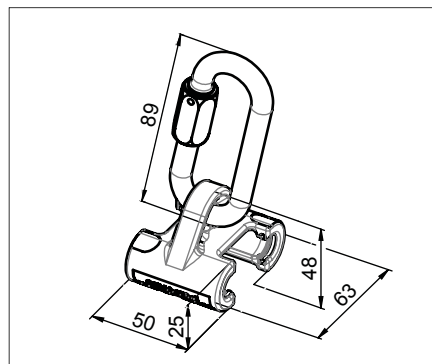
Söll MultiRail®

Mobile anchor points

Closed glider

- With sliding inserts (made of polyamide) and eyelet

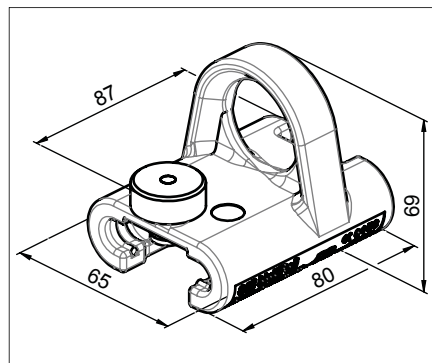
Material: Stainless steel, pickled
 Weight: 0.5 kg/each
 Part no. 17407



Lockable glider

- With sliding inserts (made of polyamide) and yellow eyelet

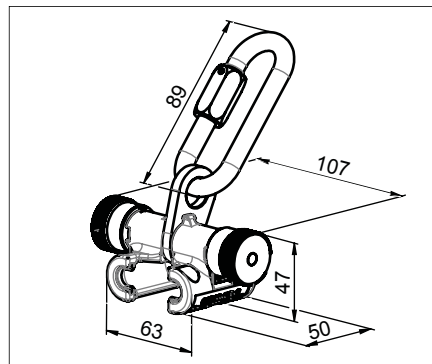
Material: Stainless steel, pickled
 Weight: 0.65 kg/each
 Part no. 26308



Openable glider

- With sliding inserts (made of polyamide) and eyelet
- Can be attached and removed at any point

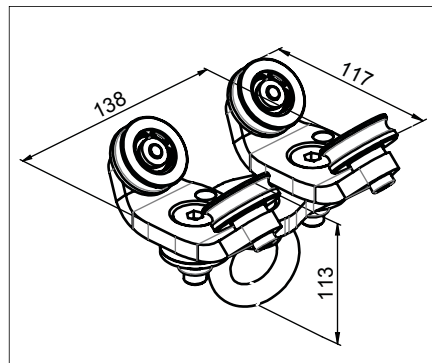
Material: Stainless steel, pickled
 Weight: 0.8 kg/each
 Part no. 17792



Wheeled trolley

- For overhead application
- To be used with a retractable type fall arrester
- With swivelable eyelet
- Can be used with rail end-stop (part no. 23956) and horizontal bend (part no. 17331)

Material: Stainless steel, pickled
 Weight: 2.0 kg/each
 Part no. 24168

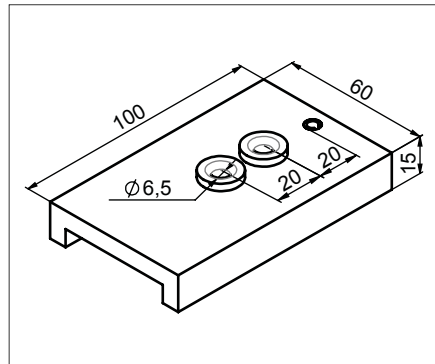


Söll MultiRail® Accessories

Drilling gauge

- Serves to make the component holes when the guide rails are shortened at the working site
- Can be clamped on the guide rail by a screw ferrule

Material: Aluminium
Weight: 0.2 kg/each
Part no. **23841**



Identification plate

- For Söll MultiRail anchor devices
- Must be affixed at each access point
- Dimensions: 150 x 70 mm
- Hole spacing: 135 x 56 mm; Ø . mm
- Languages: D/E/F/ES

Material: Aluminium
Weight: 0.1 kg/each
Part no. **25904**



Identification plate for rope access work

- For Söll MultiRail anchor devices
- Must be affixed at each access point
- Dimensions: 150 x 70 mm
- Hole spacing 135 x 56 mm Ø . mm
- Languages: D/E/F/ES

Material: Aluminium
Weight: 0.1 kg/each
Part no. **27238**



Söll MultiRail® Aluminium

- Horizontal anchor device
- Certified according to EN 795: 01 and CEN/TS 16415:2013



Söll MultiRail® Aluminium

Horizontal safety rail

- Available in lengths of 00 - 6,000 mm

- Mounting distance: recommended 4,000 mm - max. 6,000 mm

Material: Anodised aluminium

Weight: 2.7 kg/m

Sold by the metre

Part no. 26876

End piece sold by the metre

Part no. 26874

Standard length 3,000 mm

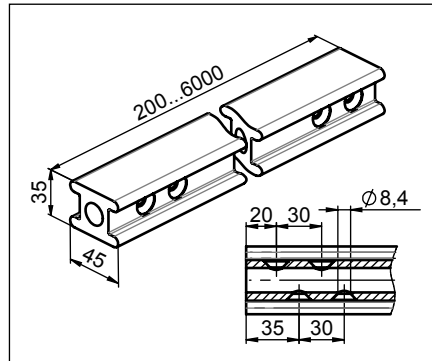
Weight: 9.0 kg/each

Part no. 26871

Standard length 6,000 mm

Weight: 18.0 kg/each

Part no. 26858



End piece standard length 3,000 mm

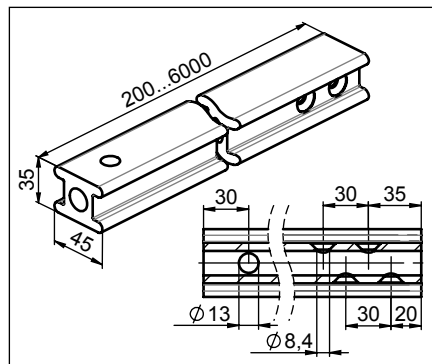
Weight: 8.0 kg/each

Part no. 26872

End piece standard length 6,000 mm

Weight: 16.0 kg/each

Part no. 26861



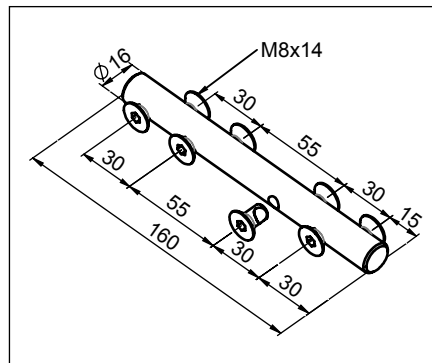
Connector

- For connecting individual rail sections

Material: Stainless steel, pickled

Weight: 0.4 kg/each

Part no. 26863

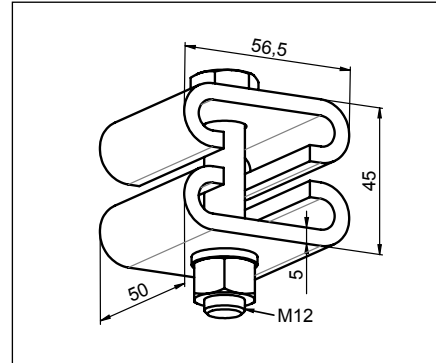


Söll MultiRail® Aluminium

Rail end-stop without exit

- To prevent the glider from coming off accidentally

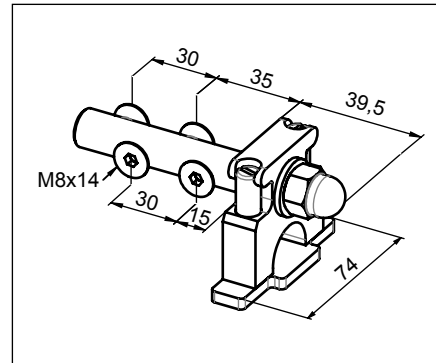
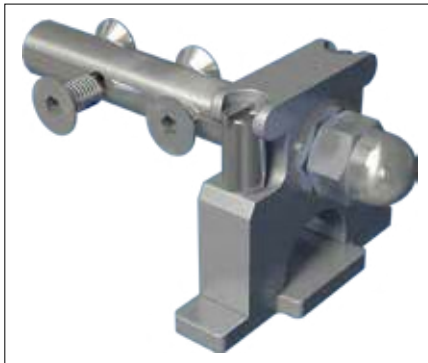
Material: Stainless steel, pickled
 Weight: 0.4 kg/each
 Part no. **26886**



Rail end-stop with exit

- To prevent the glider from coming off accidentally
- Removal of the glider by pressing the opening mechanism with one hand

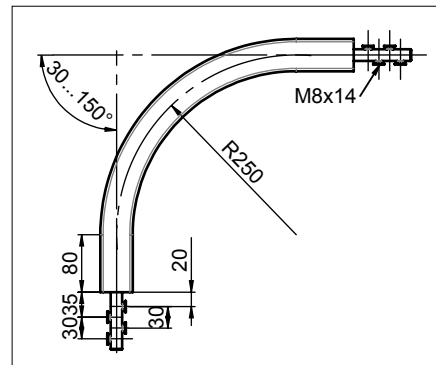
Material: Stainless steel, pickled/
 anodised aluminium
 Weight: 0.4 kg/each
 Part no. **26916**



Horizontal bend

- For horizontal use as corner turn
- R = 50 mm

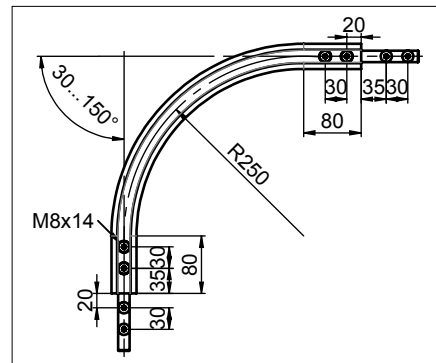
Material: Anodised aluminium
 Angle: 90°
 Weight: 1.9 kg/each
 Part no. **27058**
 Angle: 30 - 150°
 Weight: Depends on angle
 Part no. **27059**



Vertical bend

- For vertical use as corner turn
- R = 50 mm

Material: Anodised aluminium
 Angle: 90°
 Weight: 1.9 kg/each
 Part no. **27060**
 Angle: 30 - 150°
 Weight: Depends on angle
 Part no. **27061**

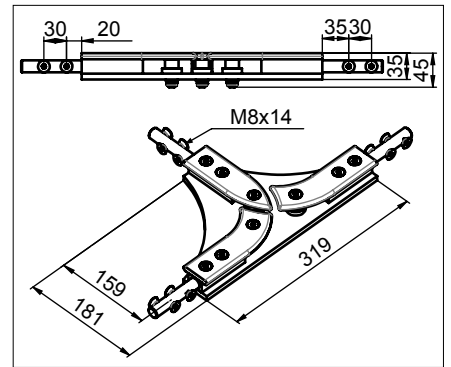


Söll MultiRail® Aluminium

Horizontal track T-change

- For safe change of travel in two directions
- The rails must be at a 90° angle to one another
- Can only be used with closed glider (part no. 17407)

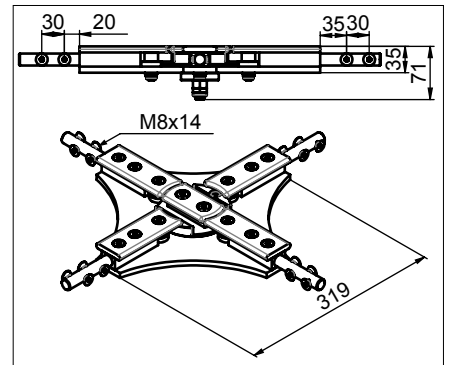
Material: Anodised aluminium/
Stainlesssteel, pickled
Weight: 2.1 kg/each
Part no. **26903**



Horizontal track X-change

- For safe change of travel in four directions
- The rails must be at a 90° angle to one another
- Can only be used with closed glider (part no. 17407)

Material: Anodised aluminium/
Stainlesssteel, pickled
Weight: 3.8 kg/each
Part no. **26914**



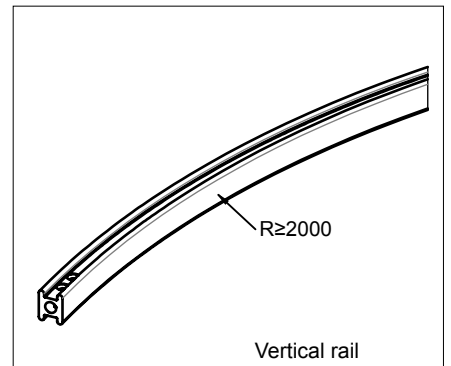
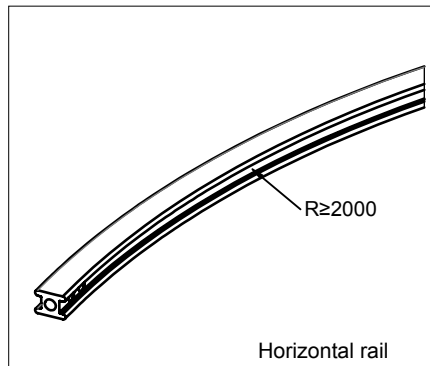
Summary of the smallest possible bending radii in mm for the Söll MultiRail® Aluminium.

Horizontal bent rail

- Bending radius is at least 2000 mm

Material: Anodised aluminium
Weight: 3.0 kg/m
Part no. **27131**

Indicate the position of the rail (horizontal, vertical) when ordering.



Single bending

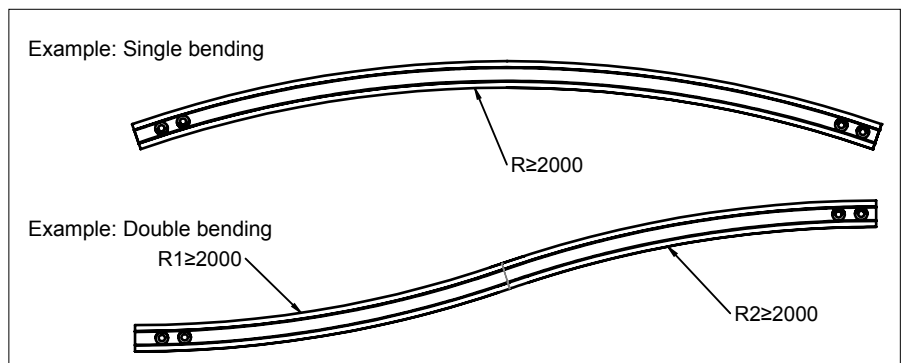
- Bending radius: min. 2000 mm

Part no. **27130**

Double bending

- Bending radius: min. 2000 mm

Part no. Available upon request

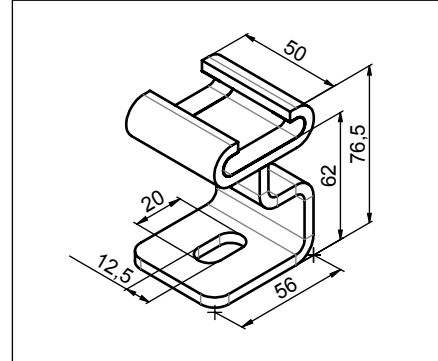


Söll MultiRail® Aluminium Fixings

Bracket 1

- With Teflon easy-slide ribbons
- The rail can move freely in the brackets
- For mounting screws M1
- Screw mounting surface parallel to the rail

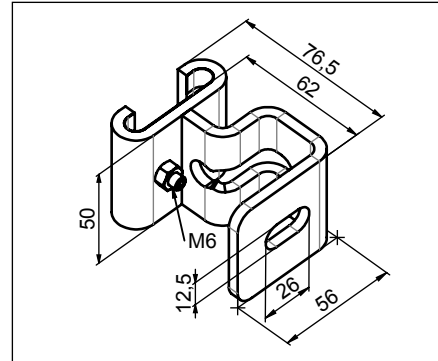
Material: Stainless steel,
pickled
Weight: 0.4 kg/each
Part no. **17489**



Bracket 1 with clamping screw M6

- With Teflon easy-slide ribbons
- For mounting screws M1
- Screw mounting surface parallel to the rail

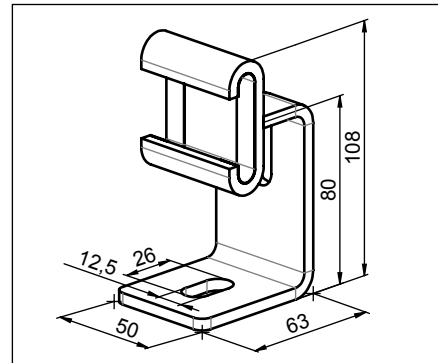
Material: Stainless steel,
pickled
Weight: 0.4 kg/each
Part no. **20168**



Bracket 2

- With Teflon easy-slide ribbons
- The rail can move freely in the brackets
- For mounting screws M1
- Screw mounting surface at right angle to the rail

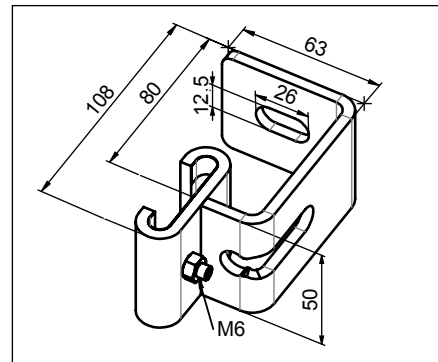
Material: Stainless steel,
pickled
Weight: 0.4 kg/each
Part no. **17112**



Bracket 2 with clamping screw M6

- With Teflon easy-slide ribbons
- For mounting screws M1
- Screw mounting surface at right angle to the rail

Material: Stainless steel,
pickled
Weight: 0.4 kg/each
Part no. **20167**



Söll MultiRail® Aluminium Fixings

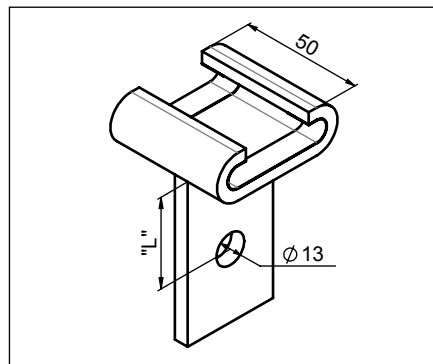
Bracket 5

- With Teflon easy-slide ribbons
- The rail can move freely in the brackets
- For overhead application
- For mounting screws M1
- Projection 'L': max. 00 mm (please indicate when ordering)

Material: Stainless steel, pickled

Weight: 0.4 kg/each

Part no. 21031



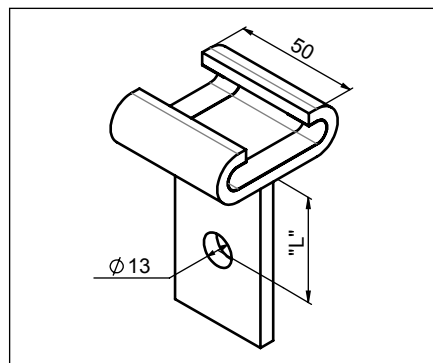
Bracket 7

- With Teflon easy-slide ribbons
- The rail can move freely in the brackets
- For overhead application
- For mounting screws M1
- Projection 'L': max. 00 mm (please indicate when ordering)

Material: Stainless steel, pickled

Weight: 0.4 kg/each

Part no. 21677



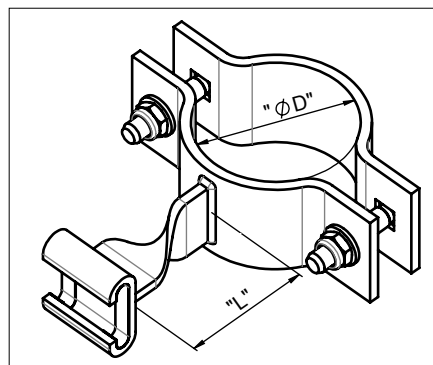
Clamp

- With Teflon easy-slide ribbons
- The rail can move freely in the brackets
- Projection 'L': 80 - 00 mm
- Complete with all mounting elements
- Please indicate projection 'L' when placing the order

Material: Stainless steel, pickled

Weight: Depends on size

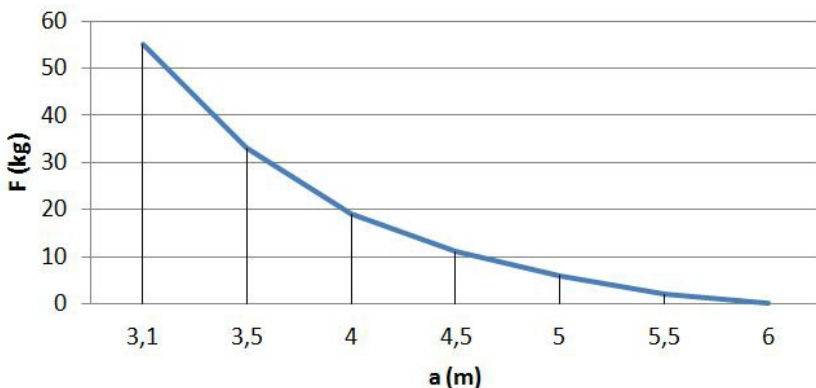
Part no. MR-BS-1AUSL-\varnothing in mm



Recommended mounting distance 'a' when using a wheeled trolley with a retractable type fall arrester

Load 'F' definition:

self-weight of retractable type fall arrester + max. retraction load of the retractable type fall arrester



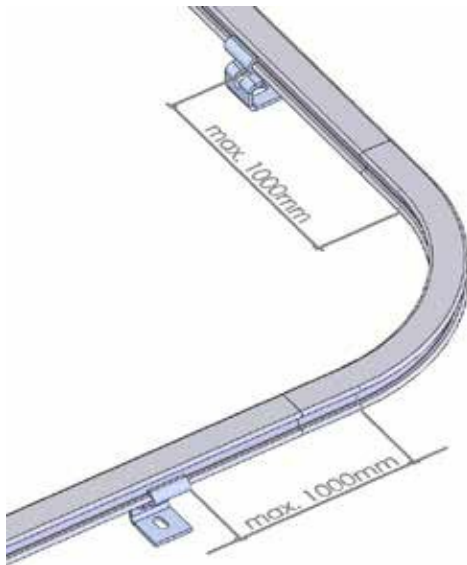
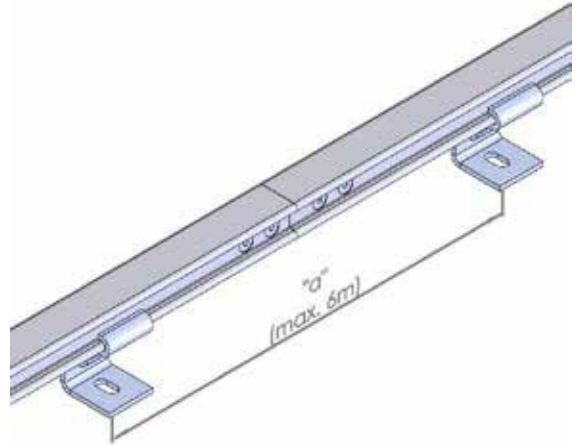
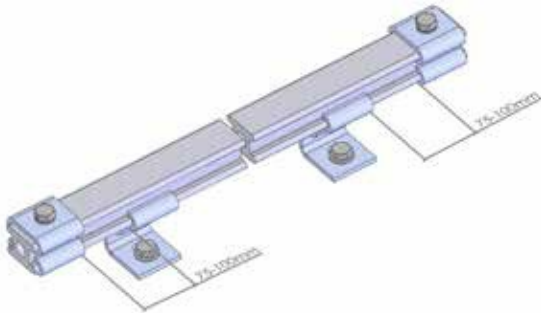
Söll MultiRail® Aluminium

Planning aid for mounting distances

Straight course of the Söll MultiRail® Aluminium anchor device:

Rail projection at the last bracket: 75 - 100 mm

Mounting distance: Recommended 4,000 mm
 Maximum 6,000 mm



L-shape of the Söll MultiRail® Aluminium anchor device:

Distance of bracket to bend: max. 1,000 mm

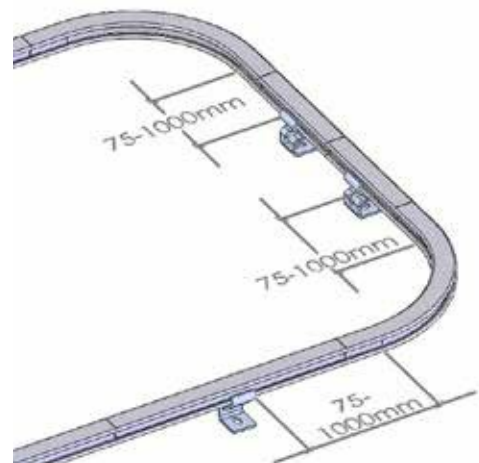
Special shapes available after consulting the manufacturer.

U-shape of the Söll MultiRail® Aluminium anchor device:

Distance of bracket to bend: 75 - 1,000 mm

Special shapes available after consulting the manufacturer

Endless/closed shape of the Söll MultiRail (aluminium) anchor device available only as an exception and after consulting the manufacturer



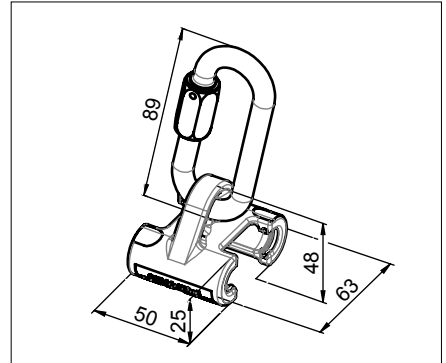
Söll MultiRail® Aluminium

Mobile anchor points

Closed glider

- With sliding inserts (made of polyamide) and eyelet

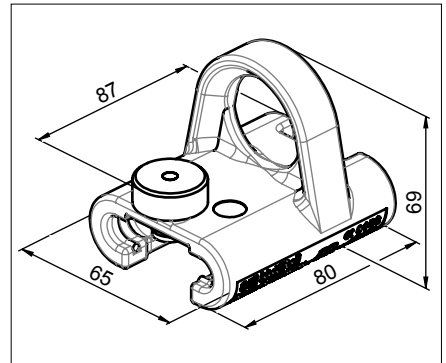
Material: Stainless steel, pickled
 Weight: 0.5 kg/each
 Part no. 17407



Lockable glider

- With sliding inserts (made of polyamide) and yellow eyelet

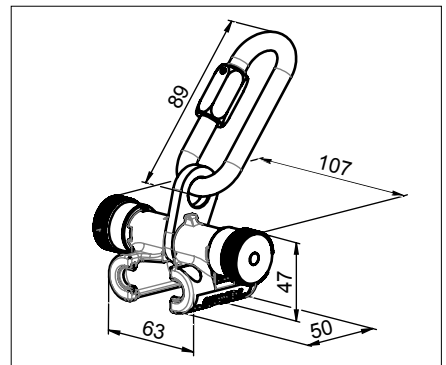
Material: Stainless steel, pickled
 Weight: 0.65 kg/each
 Part no. 26308



Openable glider

- With sliding inserts (made of polyamide) and eyelet
- Can be attached and removed at any point

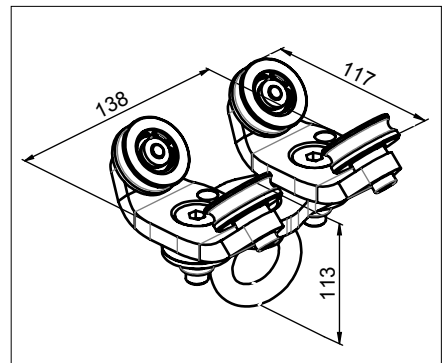
Material: Stainless steel, pickled
 Weight: 0.8 kg/each
 Part no. 17792



Wheeled trolley

- For overhead application
- To be used with a retractable type fall arrester
- With swivelable eyelet
- Can be used with rail end-stop (part no. 26916) and horizontal bend (part no. 27058)

Material: Stainless steel, pickled
 Weight: 2.0 kg/each
 Part no. 24168



Söll MultiRail® Aluminium Accessories

Identification plate

- For Söll MultiRail® Aluminium anchor devices
- Dimensions: 150 x 70 mm
- Hole spacing 135 x 56 mm, \varnothing . mm
- Languages: D/E/F/ES

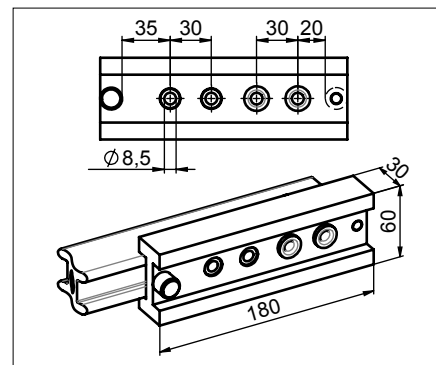
Material: Aluminium
Weight: 0.1 kg/each
Part no. **26990**



Drilling gauge

- Serves to make the component holes when the guide rails are shortened at the working site
- Can be clamped on the guide rail by a screw ferrule

Material: Aluminium
Weight: 0.5 kg/each
Part no. **26917**



sales@norrscope.com