

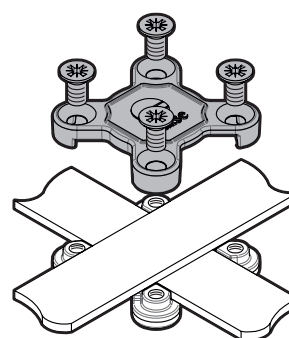
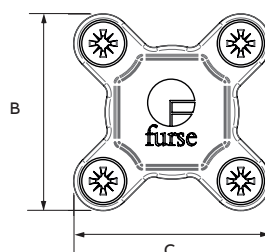
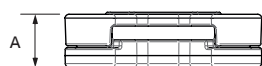
Conductor network

Conductor clamps

Square tape clamp



	Part no.	ABB order code	Dimensions (mm)			Conductor size (mm)	Conductor material	Weight each (kg)	Certification / standards
			A	B	C				
CT105-H	CT105-H	7TCA083610R0010	12.5	50	50	25 x 3	Copper	0.12	● ●
	CT110-H	7TCA083610R0015	23	62	62	25 x 6	Copper	0.30	●
	CT115-H	7TCA083610R0018	29	82	82	50 x 6	Copper	0.60	●
	CT005-H	7TCA083620R0003	12.5	50	50	25 x 3	Aluminium	0.06	●
	CT010*	7TCA083610R0007	20	60	60	25 x 6	Aluminium	0.16	●



Certification / Standards: ● IEC/BS EN 62561-1 Class H / ● UL 96.

Manufactured from high quality alloys of either copper or aluminium. Simple to install, providing an effective low resistance connection between overlapping tapes to allow cross, tee, through and right angle joints to be formed.

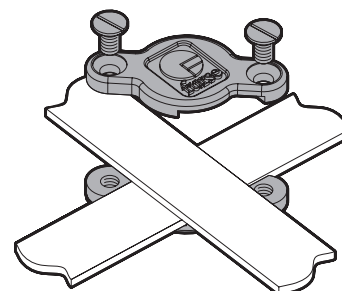
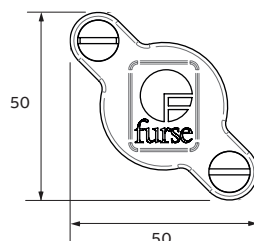
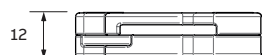
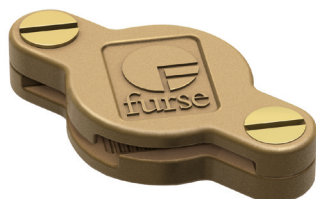
Fix using countersunk wood screws 1½" No. 10 or M6 (Part no. SW005 or SW105) and wall plugs (Part no. PS305).

Tightening torque 5 Nm.

* Not as illustrated (drawing available on request).

Crossover tape clamp

	Part no.	ABB order code	Conductor size (mm)	Conductor material	Weight each (kg)	Certification / standards
CX105-H	CX105-H	7TCA083610R0025	25 x 3	Copper	0.09	●
	CX005-H	7TCA083610R0024	25 x 3	Aluminium	0.03	●



Certification / Standards: ● BS EN 62561-1 Class H.

Manufactured from high quality alloys of either copper or aluminium. Simple to install, providing an effective low resistance connection between overlapping tapes to allow cross joints to be formed.

Fix using countersunk wood screws 1½" No. 10 or M6 (Part no. SW005 or SW105) and wall plugs (Part no. PS305).

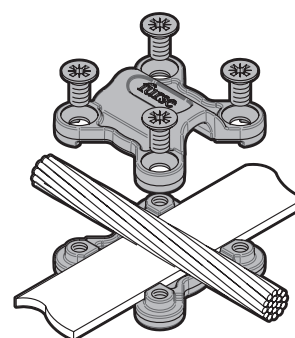
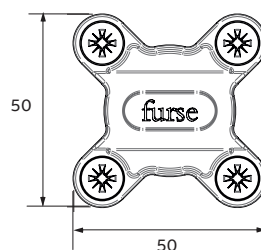
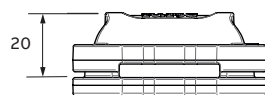
Tightening torque 5 Nm.

Conductor network

Conductor clamps

Cable to tape square clamp

Part no.	ABB order code	Conductor size	Conductor material	Weight each (kg)	Certification / standards
CT125-FU	7TCA083620R0064	25 x 3 mm to 50 mm ²	Copper	0.12	●
CT130-FU	7TCA083620R0065	25 x 3 mm to 70 mm ²	Copper	0.12	
CT135-FU	7TCA083620R0066	25 x 3 mm to 95 mm ²	Copper	0.13	



Certification / Standards: ● BS EN 62561-1 Class H.

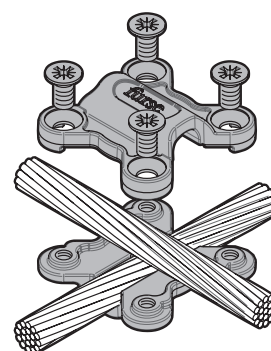
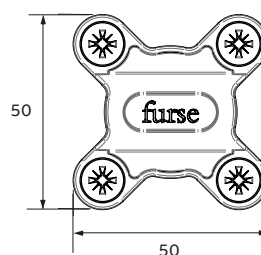
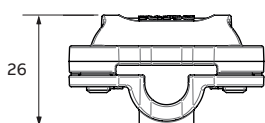
Manufactured from high quality copper alloy. Simple to install, providing an effective low resistance connection between conductor tape and stranded copper conductor, allowing cross, tee, through and right angle joints to be formed.

Fix using countersunk wood screws 1½" No. 10 or M6 (Part no. SW005 or SW105) and wall plugs (Part no. PS305).

Tightening torque 5 Nm.

Cable to cable square clamp

Part no.	ABB order code	Conductor size (mm ²)	Conductor material	Weight each (kg)	Certification / standards
CR810-FU	7TCA083660R0015	50	Copper	0.12	● ●
CR815-FU	7TCA083660R0016	70	Copper	0.13	● ●
CR820-FU	7TCA083660R0017	95	Copper	0.14	● ●



Certification / Standards: ● BS EN 62561-1 Class H / ● BS 7430.

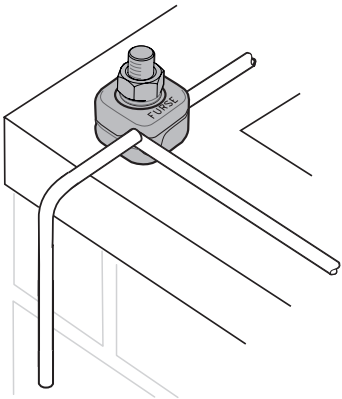
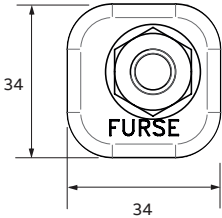
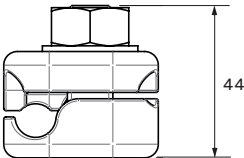
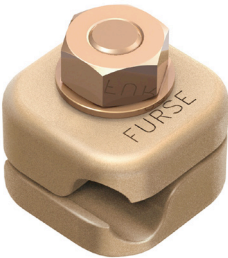
Manufactured from high quality copper alloy. Simple to install, providing an effective low resistance connection between overlapping stranded conductors allowing cross, tee, through and right angle joints to be formed.

Tightening torque 5 Nm.

Conductor network
Conductor clamps

Square clamp

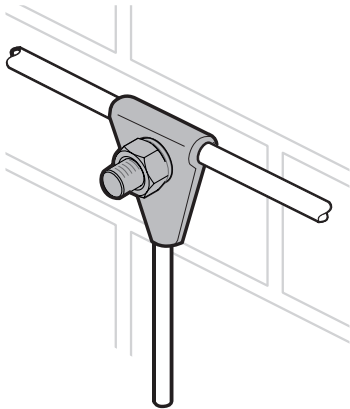
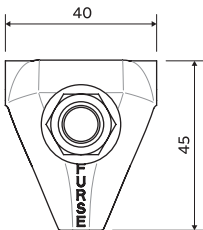
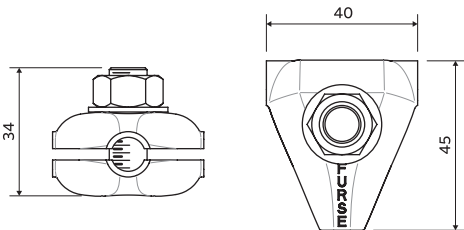
Part no.	ABB order code	Conductor size (mm)	Conductor material	Weight each (kg)	Certification / standards
CS605	7TCA083640R0006	Ø8	Copper	0.17	●●
CS610	7TCA083640R0007	Ø8	Aluminium	0.07	●●



Certification / Standards: ●BS 7430 / ●BS EN 62561-1 Class H / ●BS EN 50164-1 Class H.
Designed to provide low resistance cross joints in solid circular conductor networks.
Manufactured from high quality alloys of either copper or aluminium for excellent corrosion resistance.
Tightening torque 12 Nm.

Tee clamp

Part no.	ABB order code	Conductor size (mm)	Conductor material	Weight each (kg)	Certification / standards
CS505	7TCA083640R0004	Ø8	Copper	0.17	●
CS510	7TCA083640R0005	Ø8	Aluminium	0.07	●●



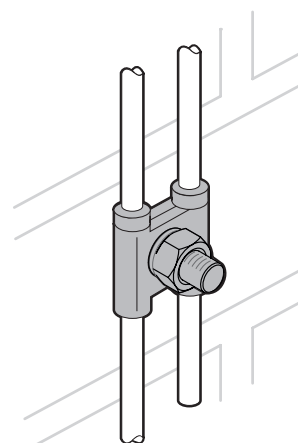
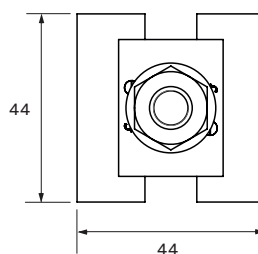
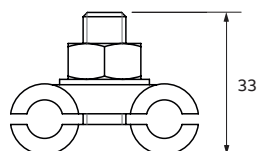
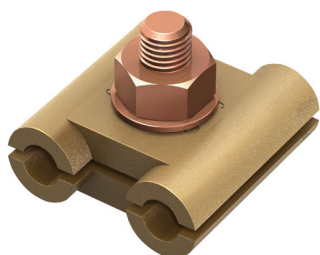
Certification / Standards: ●BS 7430 / ●BS EN 62561-1 Class H.
Designed to provide low resistance tee joints in solid circular conductor networks.
Manufactured from high quality alloys of either copper or aluminium for excellent corrosion resistance.
Tightening torque 12 Nm.

Conductor network

Conductor clamps

Jointing clamp

Part no.	ABB order code	Conductor size (mm)	Conductor material	Weight each (kg)	Certification / standards
CS405	7TCA083640R0002	Ø8	Copper	0.18	●●
CS410	7TCA083640R0003	Ø8	Aluminium	0.08	●●



Certification / Standards: ●BS EN 62561-1 Class H / ●BS 7430.

Designed to provide low resistance parallel joints in solid circular conductor networks.

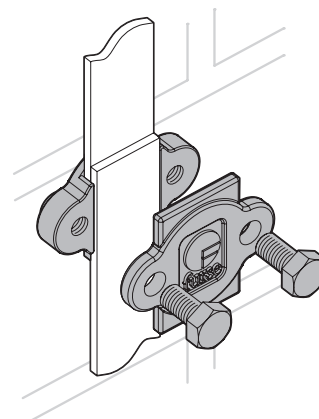
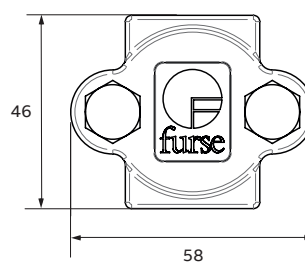
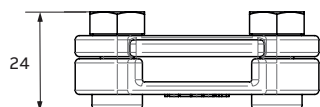
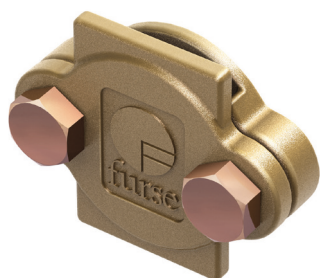
Manufactured from high quality alloys of either copper or aluminium for excellent corrosion resistance.

Tightening torque 12 Nm

Test / Junction clamp



Part no.	ABB order code	Conductor size (mm)	Conductor material	Weight each (kg)	Certification / standards
CN105-H	7TCA083610R0002	26 x 8	Copper	0.15	●●
CN005*	7TCA083620R0000	26 x 8	Aluminium	0.12	●



Certification / Standards: ●IEC/BS EN 62561-1 Class H / ●UL96.

Manufactured from high quality alloys of either copper or aluminium. Simple to install, providing an effective low resistance connection between overlapping tapes. The clamped connection is easily made/remade to allow for periodic testing.

Tightening torque CN005 15 Nm; CN105-H 13 Nm.

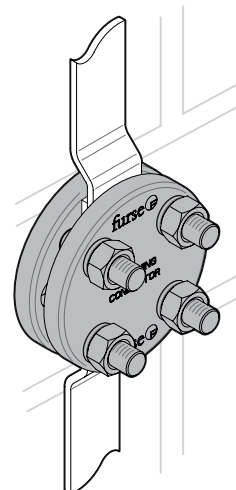
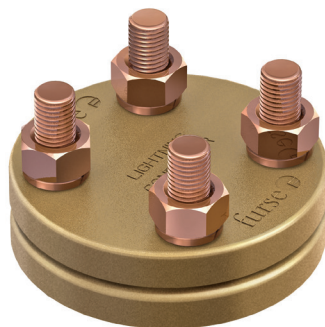
* Not as illustrated (drawing available on request).

Conductor network

Conductor clamps

Plate type test clamp

Part no.	ABB order code	Conductor size (mm)	Conductor material	Weight each (kg)	Certification / standards
CT405	7TCA083610R0023	26 x 12 max	Copper	0.60	●●



Certification / Standards: ●BS EN 62561-1 Class H / ●BS 7430.

Manufactured from a high quality copper alloy. Simple to install, providing an effective low resistance connection between overlapping tapes.

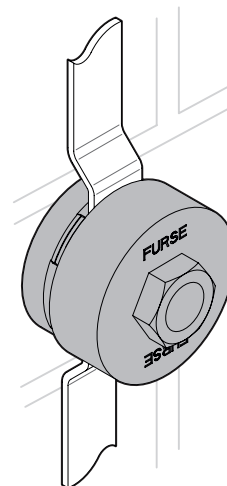
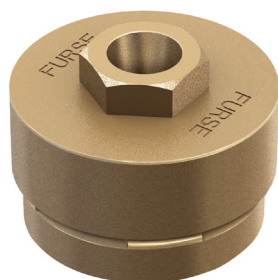
The clamped connection is easily made/remade to allow for periodic testing. Enables cross, tee, through and right angle joints to be formed.

Fix using countersunk wood screws 1½" No. 10 or M6 (Part no. SW005) and wall plugs (Part no. PS305).

Tightening torque 15 Nm.

Screwdown test clamp

Part no.	ABB order code	Conductor size (mm)	Conductor material	Weight each (kg)	Certification / standards
CT305	7TCA083610R0020	26 x 8 max	Copper	0.87	●●



Certification / Standards: ●BS EN 62561-1 Class H / ●BS 7430.

Manufactured from a high quality copper alloy. Simple to install, providing an effective low resistance connection between overlapping tapes.

The clamped connection is easily made/remade to allow for periodic testing. Enables cross, tee, through and right angle joints to be formed.

Fix using countersunk wood screws 1½" No. 10 or M6 (Part no. SW005) and wall plugs (Part no. PS305).

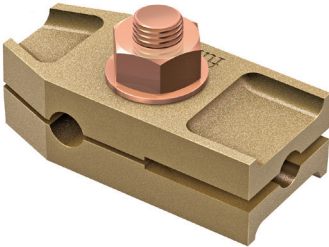
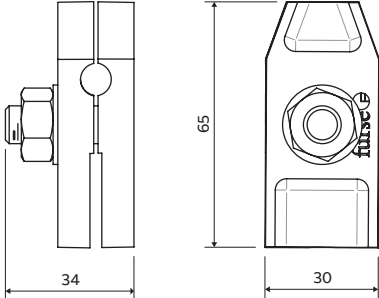
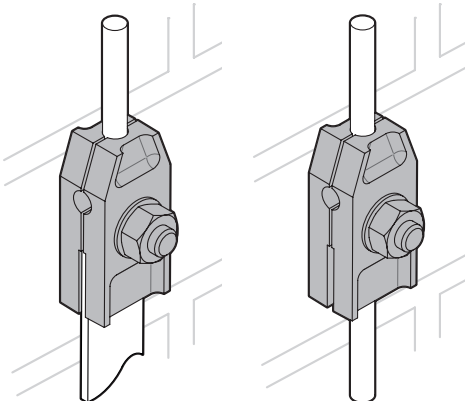
Tightening torque 20 Nm.

Conductor network

Conductor clamps

Test clamp

Part no.	ABB order code	Conductor size (mm)	Conductor size (mm)	Conductor material	Weight each (kg)	Certification / standards
CN305	7TCA083640R0000	Ø8	25 x 3	Copper	0.25	● ●
CN310	7TCA083640R0001	Ø8	25 x 3	Aluminium	0.10	● ●

Certification / Standards: ● BS EN 62561-1 Class H / ● BS 7430.

Designed to provide low resistance tee joints in solid circular conductor networks.


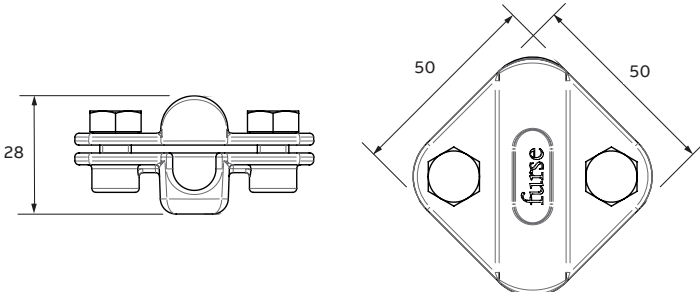
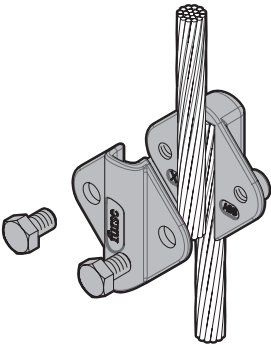
These multi-purpose clamps can produce circular to circular or circular to tape connection in both through and tee configurations.

Manufactured from high quality alloys of either copper or aluminium for excellent corrosion resistance.

Tightening torque 12 Nm.

Square test clamp

Part no.	Order code	Conductor diameter (mm ²)	Conductor material	Weight each (kg)	Certification / standards
CR855-FU	7TCA083660R0018	50	Copper	0.2	● ●
CR860-FU	7TCA083660R0019	70	Copper	0.2	● ●
CR865-FU	7TCA083660R0020	95	Copper	0.2	● ●

Certification / Standards: ● IEC/BS EN 62561-1 Class H / ● BS 7430.

Manufactured from high quality copper alloy.

Simple to install, providing an effective low resistance overlap connection between stranded copper cables.

Fix using countersunk wood screws 1½" No. 10 or M6 (Part no. SW005) and wall plugs (Part no. PS305).

Tightening torque 12 Nm.

sales@norrscope.com