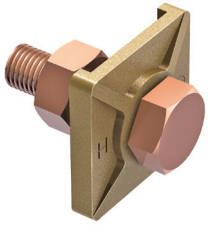


Earth bonds & clamps

Bonds & clamps

B bond



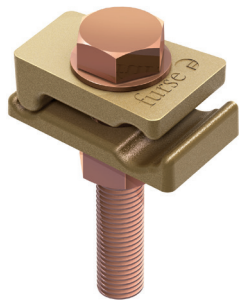
| Part no. | ABB order code | Maximum tape width (mm) | Bolt size | Conductor material | Weight each (kg) | Certification / standards |
|----------|-----------------|-------------------------|-----------|--------------------|------------------|---------------------------|
| BN105 | 7TCA083710R0000 | 26 | M10 | Copper | 0.12 | ●● |
| BN005 | 7TCA083720R0000 | 26 | M10 | Aluminium | 0.06 | ●● |

Certification / Standards: ●BS 7430 / ●IEC/BS EN 62561-1 Class H.

For bonding tape to steel structures.

Tightening torque 17 Nm.

Tower earth clamp



| Part no. | ABB order code | Conductor range (mm ²) | Channel thickness (mm) | Bolt size | Conductor material | Weight each (kg) | Cert. / standards |
|----------|-----------------|------------------------------------|------------------------|-----------|--------------------|------------------|-------------------|
| BN125* | 7TCA083710R0005 | 16-70 | 10 | M10 | Copper | 0.13 | ●● |
| BN130 | 7TCA083710R0006 | 70-120 | 10 | M12 | Copper | 0.22 | ●● |
| BN305* | 7TCA083740R0005 | 25-50 | 10 | M10 | Aluminium | 0.05 | ●● |

Certification / Standards: ●BS 7430 / ●BS EN 62561-1 Class H.

For bonding copper cable or wire to steel structures.

Tightening torque 12 Nm.

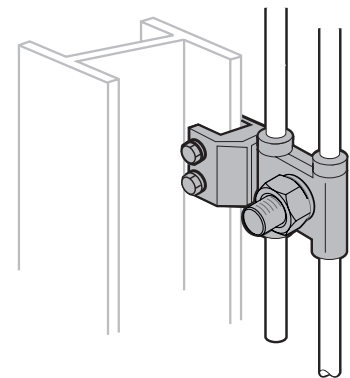
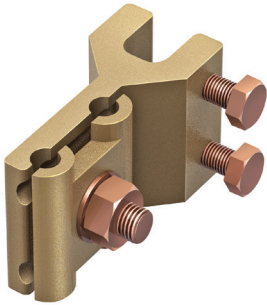
* Suitable for use with Ø8 mm solid circular conductor.

Earth bonds & clamps

Bonds & clamps

Metalwork bond

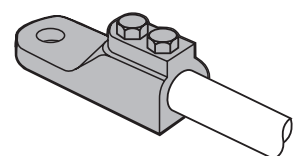
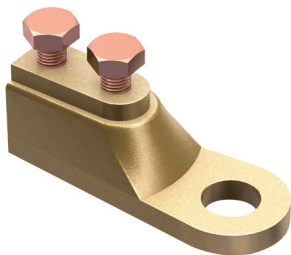
| Part no. | ABB order code | Conductor size (mm) | Conductor material | Weight each (kg) | Certification / standards |
|----------|-----------------|---------------------|--------------------|------------------|---------------------------|
| CS350 | 7TCA083740R0007 | Ø8 | Copper | 0.37 | ●● |
| CS355 | 7TCA083740R0008 | Ø8 | Aluminium | 0.17 | ●● |



Certification / Standards: ●BS 7430 / ●IEC/BS EN 62561-1 Class H.
For connecting to all types of metal structures up to 13 mm thickness.
Tightening torque - M8 bolt: 10 Nm, M10 bolt: 12 Nm.

Straight setscrew cable socket

| Part no. | ABB order code | Conductor size (mm) | Palm hole diameter (mm) | Conductor material | Weight each (kg) | Certification / standards |
|----------|-----------------|---------------------|-------------------------|--------------------|------------------|---------------------------|
| SX450 | 7TCA083740R0048 | Ø8 | 12 | Copper | 0.11 | ● |



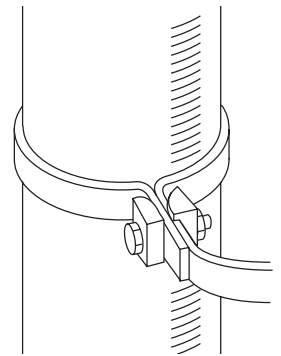
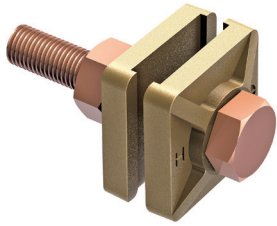
Certification / Standards: ●BS 7430 / ●BS EN 62561-1 Class H.
For bonding copper and aluminium conductors to steelwork.
Tightening torque 3 Nm.

Earth bonds & clamps

Bonds & clamps

RWP bond

| Part no. | ABB order code | Maximum tape width (mm) | Bolt size | Conductor material | Weight each (kg) | Certification / standards |
|----------|-----------------|-------------------------|-----------|--------------------|------------------|---------------------------|
| BN115 | 7TCA083710R0003 | 26 | M10 | Copper | 0.12 | ● |
| BN010 | 7TCA083720R0002 | 26 | M10 | Aluminium | 0.07 | ● |

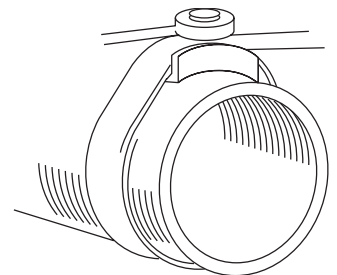
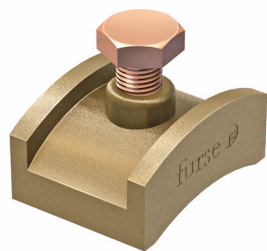


Certification / Standards: ●BS 7430.

For bonding tape to rainwater pipes, handrails etc.

Watermain bond

| Part no. | ABB order code | Maximum tape width (mm) | Conductor material | Weight each (kg) | Certification / standards |
|----------|-----------------|-------------------------|--------------------|------------------|---------------------------|
| BN120 | 7TCA083710R0004 | 26 | Copper | 0.26 | ● |



Certification / Standards: ●BS 7430.

For bonding tape to large diameter pipes.