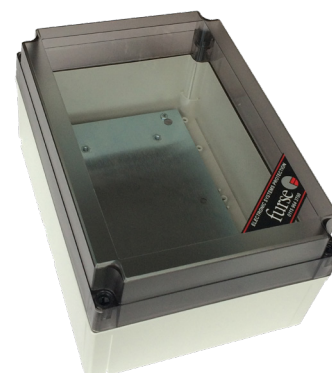


# Protector accessories

## WBX Series



A range of moisture and dirt resistant enclosures for the convenient installation of any ESP protector. For signalling applications they can be used with their associated CME with grey base and either a see-through or grey (part number /G or /GS) lid.

### Features & benefits

- Tough polycarbonate enclosures (except ABS WBX 2/G)
- Weatherproof with IP resistance to dirt and water of IP56 or more
- Clear lid enables easy visual inspection of the protector's visual status indication (WBX 3, WBX 4, WBX D4, WBX 8, WBX D8, WBX M2, WBX M4)
- Grey lid for applications not needing regular protector inspection (WBX 2/G, WBX 3/G, WBX 4/GS, WBX 8/GS and WBX 16/2/G)
- For external CCTV and other installations requiring added security the WBX 4/GS and WBX 8/GS are supplied with an opaque lid and special secure head screws (plus tool)
- Supplied complete with metal base (mounting) plate with pre-prepared mounting positions and fixing hardware for easy installation (except WBX 2/G which has a plain metal base)

### Application

Use WBX enclosures when your ESP protector(s) can't be installed within the existing equipment panel or enclosure and for added protection in damp and dirty environments.

### Installation

The protector(s), or CME kit, are mounted on the metal base plate, which in turn mounts in the enclosure.

Enclosure part no.	For use with following protectors
WBX D4*	1 ESP 240 or 415/XXX/TNS or TNC protector, or single phase D1 series protector ESP T1 series SPDs, such as the ESP 415T1/25/TNS (use low height DIN rail supplied to mount T1 series SPD within enclosures) ESP T2 series SPDs, such as the 2TE wide (36mm) ESP 240T2/50/TT (use supplied blanking plates to cover exposed 2TE opening in inspection window. Use tall height DIN rail supplied to mount T2 series SPD within enclosure)
WBX D8*	1 ESP 415/XXX/TT protector, or three phase D1 series protector ESP 415/I/TT (5TE wide - use supplied blanking plates to cover exposed 3TE in inspection window. Use tall height DIN rail to mount the unit within the enclosure)
WBX 3	1 single phase M1 series protector, such as ESP240M1
WBX 4	1 three phase M1 series protector, such as ESP415M1
WBX M2	1 ESP M2 series protector, such as ESP415M2
WBX M4	1 ESP M4 series protector, such as ESP415M4
WBX 4 or the secure WBX 4/GS	1 CME 4 and associated protectors
WBX 8 or the secure WBX 8/GS	1 CME 8 and associated protectors
WBX 16/2/G	1 or 2 CME 16 and associated protectors
WBX 2/G	1 or 2 single earth stud protectors
WBX 3/G	Up to 3 single earth stud protectors
WBX 3/G	1 double earth stud protector
WBX SLQ or WBX SLQ/G	Up to 6 x ESP**Q, or up to 15 x ESP SL**

\* Metallic enclosures (WBX D4 and WBX D8) also available

**WBX Series - Technical specification**

	<b>WBX 2/G</b>	<b>WBX 3 WBX 3/G</b>	<b>WBX 4 WBX 4/GS</b>	<b>WBX D4</b>	<b>WBX 8 WBX 8/GS</b>	<b>WBX D8</b>	<b>WBX 16/2/G</b>	<b>WBX M2</b>	<b>WBX M4</b>	<b>WBX SLQ WBX SLQ/G</b>
<b>ABB Order Code</b>	7TCA085410R0022	7TCA085410R0023 7TCA085410R0024	7TCA085410R0027 7TCA085410R0028	7TCA085410R0032	7TCA085410R0030 7TCA085410R0031	7TCA085410R0033	7TCA085410R0020	7TCA085410R0034	7TCA085410R0035	7TCA085410R0037 7TCA085410R0036
Weight: – Unit	0.45 kg	0.5 kg	0.9 kg	0.4 kg	1.3 kg	0.55 kg	6.4 kg	1.9 kg	2.2 kg	0.7 kg
– Packaged	0.5 kg	0.55 kg	0.95 kg	0.45 kg	1.35kg	0.6 kg	7.6 kg	2.3 kg	3.0 kg	1.0 kg
<b>Dimensions:</b>										
Length: – Internal	150 mm	222 mm	246 mm	–	225 mm	–	460 mm	254 mm	254 mm	230 mm
– External	160 mm	230 mm	255 mm	174 mm	235 mm	220 mm	474 mm	280 mm	280 mm	250 mm
Width: – Internal	110 mm	72 mm	171 mm	–	225 mm	–	380 mm	254 mm	254 mm	105 mm
– External	120 mm	80 mm	180 mm	104 mm	235 mm	205 mm	396 mm	280 mm	280 mm	125 mm
Depth: – Internal	71 mm	79 mm	119 mm	–	100 mm	–	120 mm	115 mm	165 mm	110 mm
– External	90 mm	85 mm	125 mm	112 mm	117 mm	140 mm	128 mm	130 mm	180 mm	125 mm
Fixing centres (mm)	148 x 90	210 x 60	240 x 165	110 centrally	215 x 215	90 x 94	380 x 310	254 x 254	254 x 254	235 x 110
IP rating	IP66	IP67	IP66	IP65	IP66	IP65	IP56	IP67	IP67	IP67
Temperature range	-40 to +80 °C	-40 to +80 °C	-15 to +75 °C	-25 to +60 °C	-15 to +75 °C	-25 to +60 °C	-25 to +60 °C	-40 to +80 °C	-40 to +80 °C	-40 to +80 °C
Flammability	UL 746C 5V	UL 746C 5V	UL 94 V2	UL 94 V0	UL 94 V2	UL 94 V0	UL 94 V0	UL 746C 5V	UL 746C 5V	UL 746C 5V

We reserve the right to make technical changes or modify the contents of this document without prior notice. With regard to purchase orders, the agreed particulars shall prevail. ABB AG does not accept any responsibility whatsoever for potential errors or possible lack of information in this document.

We reserve all rights in this document and in the subject matter and illustrations contained therein. Any reproduction, disclosure to third parties or utilisation of its contents – in whole or in parts – is forbidden without prior written consent of ABB AG. Copyright © 2021 ABB  
All rights reserved