

## Dräger REGARD configuration software Dräger REGARD interface card

The new Dräger REGARD configuration software allows safe and fast parameterization and documentation of Dräger REGARD systems.



### APPLICATION

Dräger REGARD configuration software enables you to download the configuration of an existing Dräger REGARD system and store it in electronic form or print it out for documentation purposes. The integrated comparison function allows quick and automatic comparison of the configuration stored on the PC and the system configuration.

In addition, you can also create and store system configurations in offline mode. These configurations can then be transferred to the Dräger REGARD system, for example while commissioning.

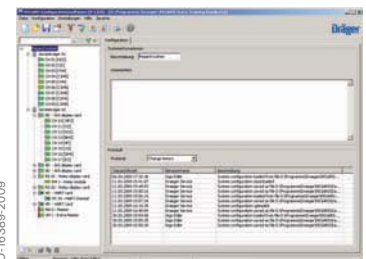
The software supports replacement of defective cards and thus reduces the time that has to be spent on re-configuration and testing.

### SYSTEM REQUIREMENTS

The Dräger REGARD system must be equipped with a master card and an interface card. The Dräger REGARD interface card is connected to the PC via a USB port. The PC operating system can be Windows 2000, Windows XP or Windows Vista.

### APPROVAL

DEKRA Exam has tested the Dräger REGARD interface card and the Dräger REGARD configuration software and confirmed that they can be used on performance approved systems.



Dräger REGARD configuration software



Dräger REGARD interface card

## SYSTEM REQUIREMENTS FOR THE DRÄGER REGARD CONFIGURATION SOFTWARE

Operating systems	Windows 2000
	Windows XP
	Windows Vista

## TECHNICAL DATA FOR THE DRÄGER REGARD INTERFACE CARD

### Operating conditions

Temperature	0 to + 55 °C
Humidity	0 to 90 % relative humidity, non-condensing
Vibration	Acc. to 60079-21-1
Voltage range	18 – 30 VDC
Power consumption	90 mA max. (at 24 VDC)
Approvals	DMT 02 ATEX G 002 X
Interface	USB 2.0 (USB 1.1-compatible)

## ORDER INFORMATION

Dräger REGARD interface card (incl. configuration software and USB cable)	8322990
---	---------

**sales@norrscope.com**