

GEMÜ 566

Manually operated control valve



Features

- Control of liquid and gaseous media from 63 l/h to 2500 l/h
- Linear or equal-percentage control characteristic options
- Hermetic separation between medium and actuator
- Actuator and actuator type can be changed without draining or removing the valve body from the piping
- Various types of actuators available

Description

The GEMÜ 566 2/2-way straight seat control valve has a body with an integrated control mechanism. Manual, pneumatic and motorized actuator types are available. The GEMÜ 566 valve was specially developed for controlling small quantities and allows flow rates from 63 l/h to 2500 l/h.

Product comparison



GEMÜ 566



GEMÜ 566



GEMÜ 566

Operation			
Manual	●	-	-
Pneumatic	-	●	-
Motorized	-	-	●
Nominal sizes	DN 8 to 15	DN 8 to 15	DN 8 to 15
Operating pressure	0 to 6 bar	0 to 6 bar	0 to 6 bar
Body material			
1.4435, investment casting material	●	●	●
Connection types			
Clamp	●	●	●
Threaded connection	●	●	●

Product description

Construction - manual valve



Item	Name	Materials
1	Optical position indicator	
2	Handwheel	
3	Distance piece with leak detection hole	1.4305 / 1.4408
4	Valve body	ASTM A 351 CF3M, investment casting

Availability

Availability of valve bodies

Threaded connection / Flange

DN	Connection type code 1 ¹⁾	Connection type code 88 ¹⁾
Material code C1 ²⁾		
8	X	-
10	X	-
15	X	X
20	-	X

X = Standard

1) Connection type

Code 1: Threaded socket DIN ISO 228

Code 88: Clamp ASME BPE, face-to-face dimension FTF EN 558 series 7

2) Valve body material

Code C1: ASTM A 351 CF3M, investment casting

Order data

The order data provide an overview of standard configurations.

Please check the availability before ordering. Other configurations available on request.

Order codes

1 Type	Code
Control valve	566

2 DN	Code
DN 8	8
DN 10	10
DN 15	15
DN 20	20

3 Body configuration	Code
2/2-way body	D

4 Connection type	Code
Threaded socket DIN ISO 228	1
Clamp ASME BPE, face-to-face dimension FTF EN 558 series 7	88

5 Valve body material	Code
ASTM A 351 CF3M, investment casting	C1

6 Seal material	Code
FPM	4

6 Continuation of Seal material	Code
EPDM	33

7 Control function	Code
Manually operated	0

8 Actuator version	Code
Actuator size 1 with locking device.	1TB
Actuator size 1 without locking device.	1TN

9 Control characteristic	Code
Modified equal-percentage	G
Linear	L

10 Kv value	Code
63 l/h	63
100 l/h	100
160 l/h	160
1000 l/h	1000
1600 l/h	1600
2500 l/h	2500

Order example

Order option	Code	Description
1 Type	566	Control valve
2 DN	8	DN 8
3 Body configuration	D	2/2-way body
4 Connection type	1	Threaded socket DIN ISO 228
5 Valve body material	C1	ASTM A 351 CF3M, investment casting
6 Seal material	4	FPM
7 Control function	0	Manually operated
8 Actuator version	1TN	Actuator size 1 without locking device.
9 Control characteristic	G	Modified equal-percentage
10 Kv value	63	63 l/h

Technical data

Medium

Working medium: Corrosive, inert, gaseous and liquid media which have no negative impact on the physical and chemical properties of the body and diaphragm material.

Temperature

Media temperature: Standard: 0 °C to 90 °C
 CIP max. 30 min. 85 °C
 (isolating diaphragm material code 33)

Ambient temperature: -15 to 60 °C

Storage temperature: 0 to 40 °C

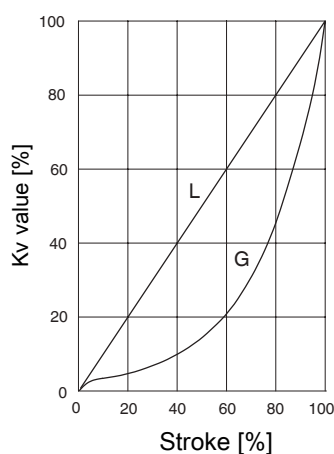
Pressure

Operating pressure: 0 to 6 bar
 All pressures are gauge pressures. Valve bodies are approved up to PN 10.

Leakage rate:

Seat seal	Standard	Test procedure	Leakage rate	Test medium
Metal	DIN EN 60534-4	1	IV	Air

Kv values:



Equal-percentage (connection code 1) / linear (connection code 1)

Control characteristic	Seat Ø [mm]	Kv value	DN 8	DN 10	DN 15
G	3	63	X	-	-
G, L	3	100	X	-	-
G	3	160	X	-	-
G, L	6	250	X	-	-
G	6	400	X	-	-
G, L	6	630	X	-	-
G	11	1000	-	X	-
G, L	11	1600	-	X	-
G, L	15	2500	-	-	X

Technical data

Kv values:

Equal-percentage (connection code 88) / linear (connection code 88)

Control characteristic	Seat Ø [mm]	Kv value	DN 15	DN 20
G	3	63	X	-
G, L	3	100	X	-
G	3	160	X	-
G, L	6	250	X	-
G	6	400	X	-
G, L	6	630	X	-
G	11	1000	X	-
G, L	11	1600	X	-
G, L	15	2500	-	X

Product compliance

Food: FDA*
* only for seal material code 33

Machinery Directive: 2006/42/EU

EAC: TR CU 010/2011
TR CU 004/2011

Mechanical data

Stroke: 5 mm

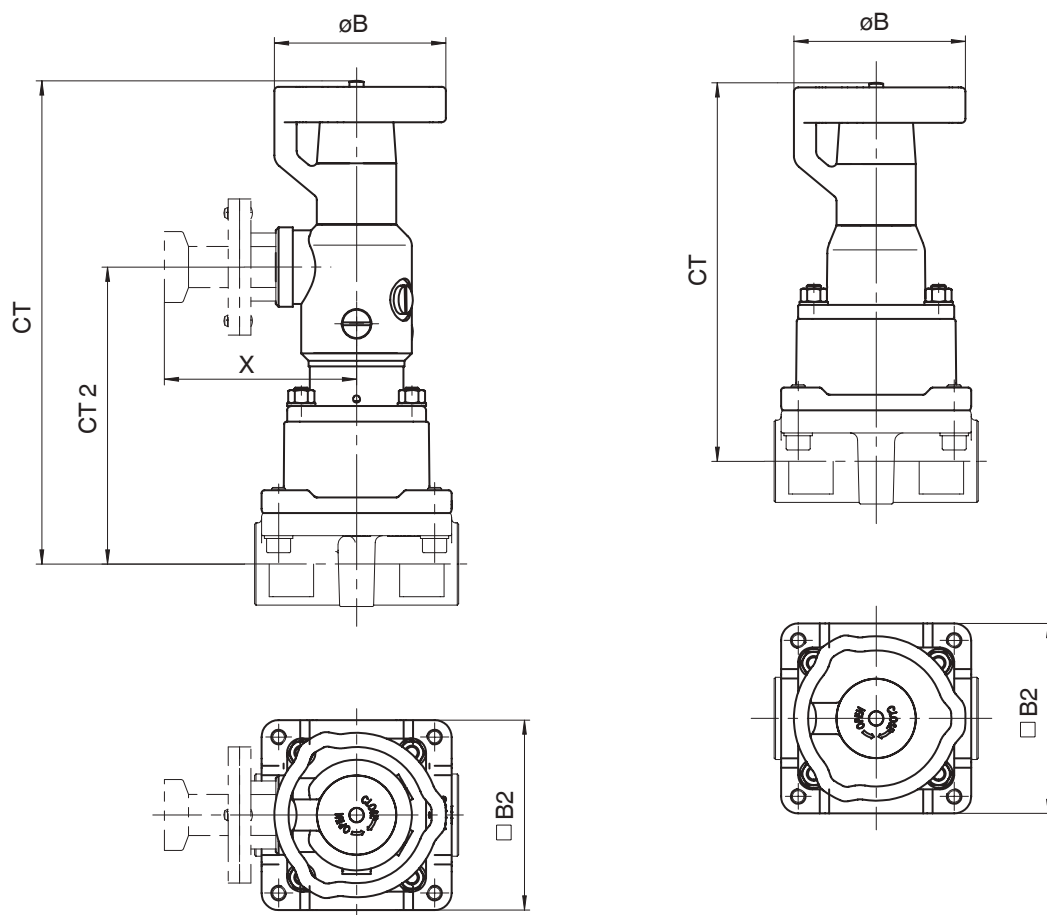
Weight:

DN 8	4.0
DN 10	4.0
DN 15	3.5
DN 15, code 88	4,2
DN 20, code 88	4.2

Weights in kg

Dimensions

Installation and actuator dimensions



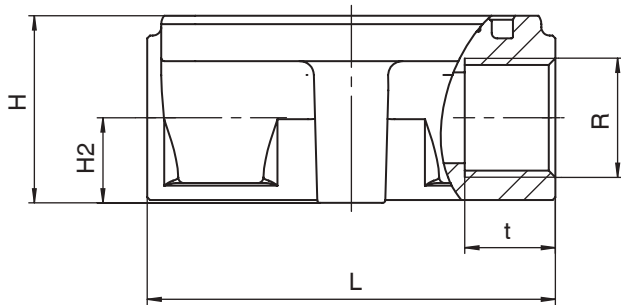
Actuator size	CT	CT2	$\varnothing B$	$\square B2$	X	
					MAG	LOC
1TB	170	105	63	67	107	73
1TN	135	-	63	67	-	-

Dimensions in mm

Dimensions

Body dimensions

Threaded socket

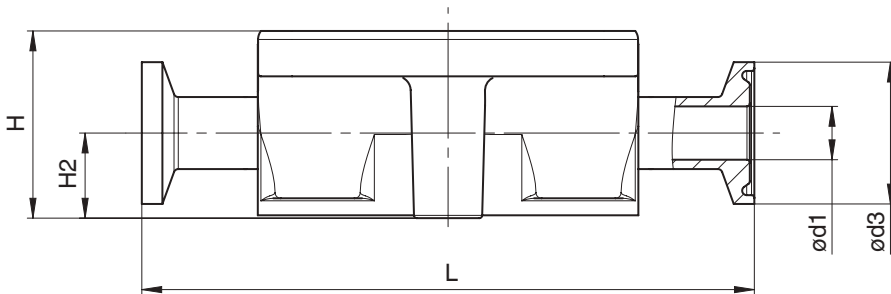


DN	Connection type code 1 ¹⁾				
	Material code C1 ²⁾				
	R	t	H	H2	L
8	G 1/4	16.0	33.0	15.0	72.0
10	G 3/8	16.0	33.0	15.0	72.0
15	G 1/2	16.0	33.0	15.0	72.0

Dimensions in mm

- 1) Connection type**
Code 1: Threaded socket DIN ISO 228
- 2) Valve body material**
Code C1: ASTM A 351 CF3M, investment casting

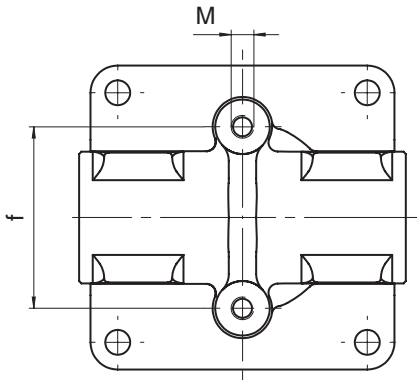
Clamp



DN	Connection type code 88 ¹⁾				
	Material code C1 ²⁾				
	L	H	H2	ød1	ød3
15	108.0	33.0	15.2	9.40	25.0
20	117.0	33.0	15.2	15.75	25.0

Dimensions in mm

- 1) Connection type**
Code 88: Clamp ASME BPE, face-to-face dimension FTF EN 558 series 7
- 2) Valve body material**
Code C1: ASTM A 351 CF3M, investment casting

Valve body mounting

DN	f	M
8,10,15,20	40	M5

Dimensions in mm

sales@norrscope.com