

HPCO₂ Component Description

Discharge Head, Grooved Nut



P/N: 81-872442-000

Effective: January 2019

K-81-1070 Rev AD

FEATURES

- Forged brass parts
- Integral check feature
- Swivel Connection onto Discharge Valve (1/2" or 5/8")
- 0°F (-18°C) to 130°F (55°C) agency temperature range
- Underwriters' Laboratories Listed - File Number EX923
- Factory Mutual Approved - Standard 5420
- United States Coast Guard Approved
- Various marine Class Society Approvals

DESCRIPTION

The grooved nut discharge head attaches to the discharge valve on a Kidde High Pressure Carbon Dioxide (CO₂) cylinder assembly secured at the project site. The discharge head uses CO₂ pressure to open the discharge valve. Pressure may be applied only from the cylinder, when fitting a control head to the discharge valve. To differentiate the groove nut discharge head from the plain nut discharge head, a pair of grooves are notched into the swivel nut for visual identification.

The discharge head also features a metal to metal check, which eliminates the need for a separate check valve at each manifold connection.

Typical projects utilizing the groove nut discharge head include single cylinder main and reserve systems or hoseline systems, among others.

A discharge flex hose connects the discharge head to the system manifold. Alternatively, a swivel adapter may be used in place of a discharge flex hose to connect to the system manifold. A discharge head needs to be ordered for each cylinder assembly.

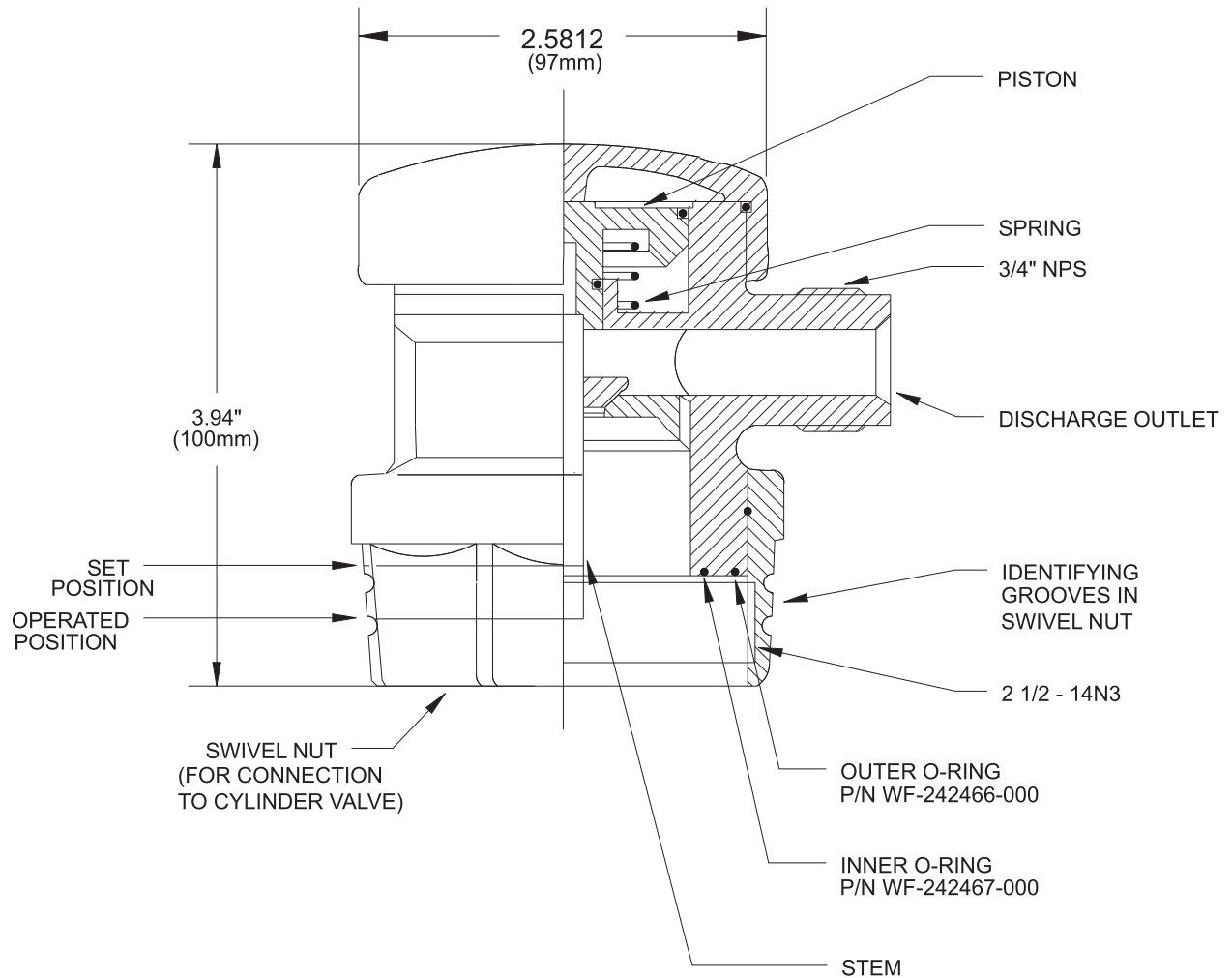


ORDERING INFORMATION

| Description | Part Number |
|-----------------------------|---------------|
| Discharge Head, Grooved Nut | 81-872442-000 |

REFERENCED COMPONENTS

| Description | Reference Data Sheet |
|---|----------------------|
| Cylinder & Valve Assembly, 75/100-lbm | K-81-1010 |
| Cylinder & Valve Assembly, 25/35/50-lbm | K-81-1020 |
| Discharge Head, Plain Nut | K-81-1060 |
| Discharge Hose, 1/2" NPT | K-81-1080 |
| Discharge Hose, 3/4" NPT | K-81-1090 |
| Adapter, Swivel | K-81-1105 |



MATERIALS

BODY: BRASS

O-RINGS: RUBBER

SPRING: STAINLESS STEEL

STOP CHECK: BRASS

Enquiries email: sales@norrscope.com