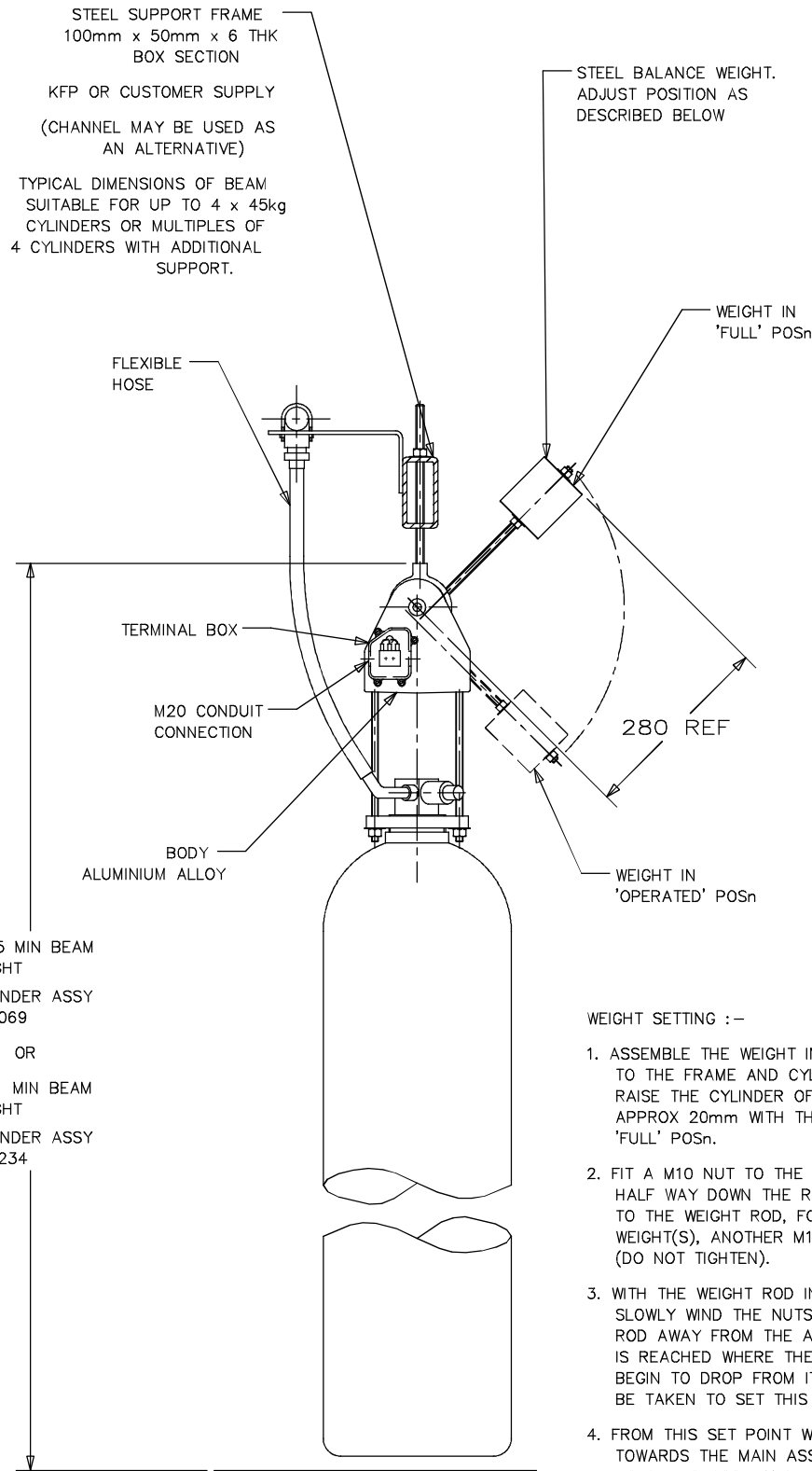


FOR TRANSPORTATION OF CYLINDERS WITHIN A SKID ASSY, REMOVE ONE END OF THE FLEXIBLE HOSE & LOWER THE CYLINDERS TO THE SKID BASE FOR SUPPORT.

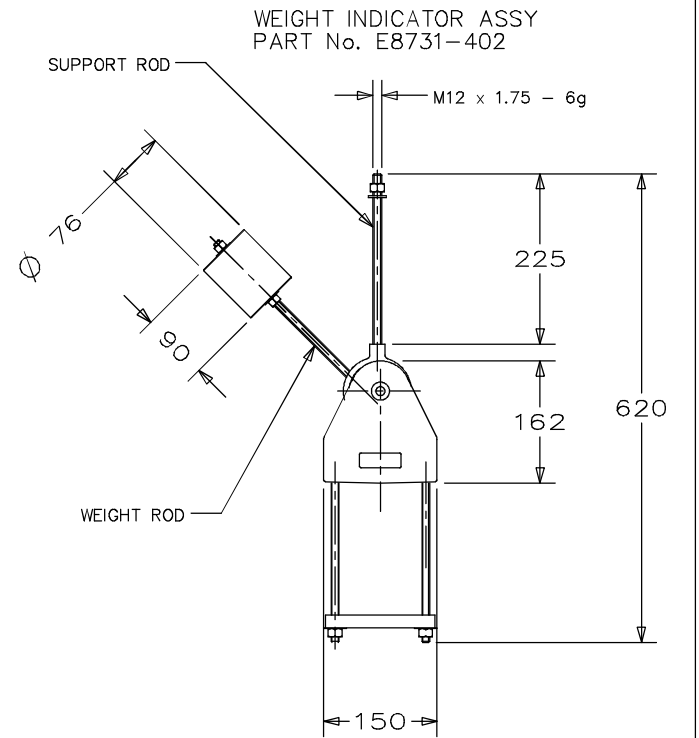
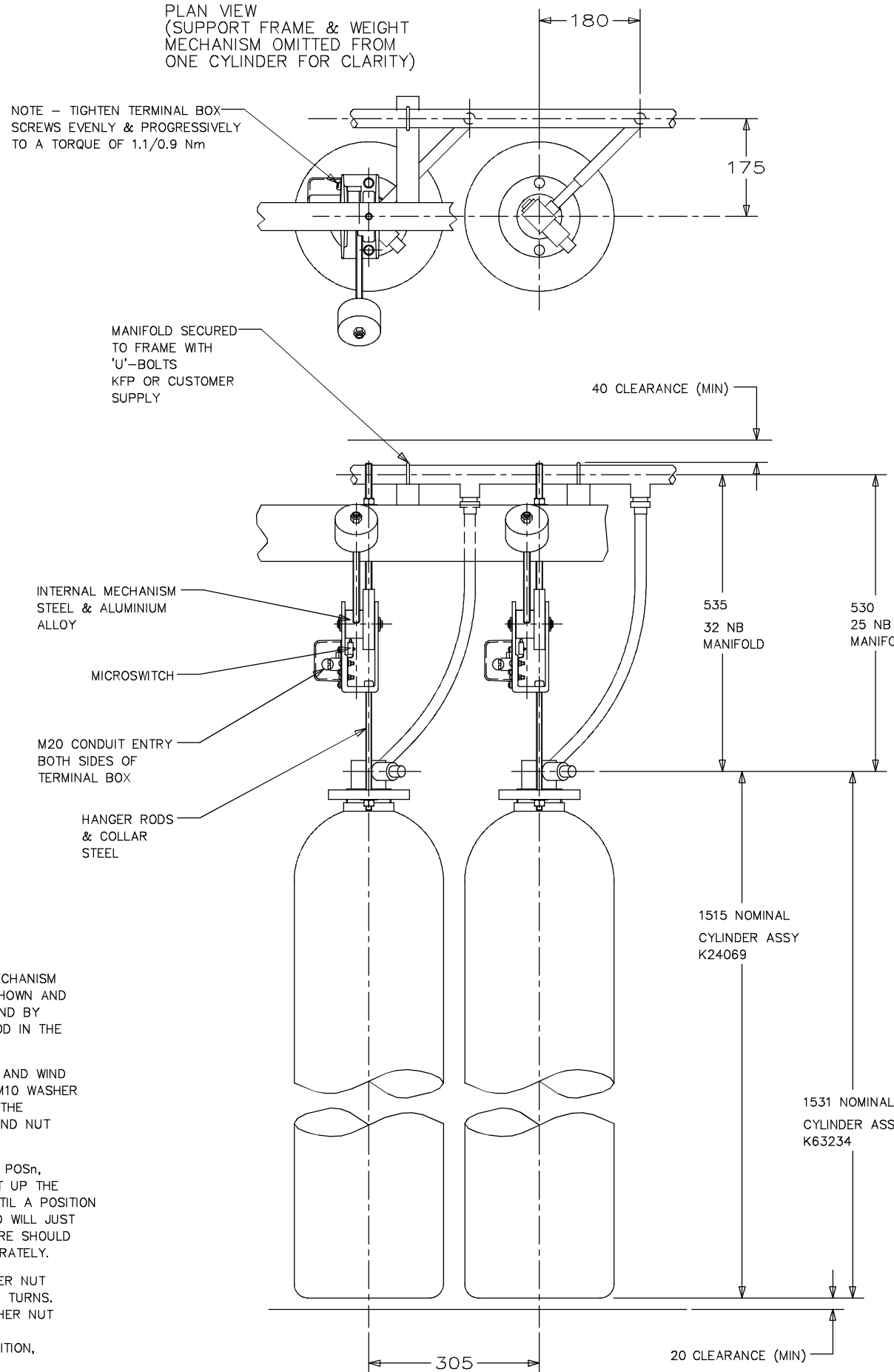
PLAN VIEW
 (SUPPORT FRAME & WEIGHT MECHANISM OMITTED FROM ONE CYLINDER FOR CLARITY)

NOTE - TIGHTEN TERMINAL BOX SCREWS EVENLY & PROGRESSIVELY TO A TORQUE OF 1.1/0.9 Nm



WEIGHT SETTING :-

1. ASSEMBLE THE WEIGHT INDICATOR MECHANISM TO THE FRAME AND CYLINDER AS SHOWN AND RAISE THE CYLINDER OFF THE GROUND BY APPROX 20mm WITH THE WEIGHT ROD IN THE 'FULL' POSn.
2. FIT A M10 NUT TO THE WEIGHT ROD AND WIND HALF WAY DOWN THE ROD. FIT AN M10 WASHER TO THE WEIGHT ROD, FOLLOWED BY THE WEIGHT(S), ANOTHER M10 WASHER AND NUT (DO NOT TIGHTEN).
3. WITH THE WEIGHT ROD IN THE 'FULL' POSn, SLOWLY WIND THE NUTS AND WEIGHT UP THE ROD AWAY FROM THE ASSEMBLY UNTIL A POSITION IS REACHED WHERE THE WEIGHT ROD WILL JUST BEGIN TO DROP FROM ITS STOP. CARE SHOULD BE TAKEN TO SET THIS POINT ACCURATELY.
4. FROM THIS SET POINT WIND THE INNER NUT TOWARDS THE MAIN ASSEMBLY BY 5 TURNS. HOLD THIS POSn AND LOCK THE OTHER NUT AGAINST THE WEIGHT. WITH THE WEIGHT IN THE 'FULL' POSITION, THE DEVICE IS NOW SET.



ALL SCREWS & STEEL FITTINGS ZINC PLATED

SWITCH DETAILS:

TYPE: SINGLE POLE CHANGEOVER
 RATING: 250V AC 5 AMP RESISTIVE
 SEALING: BS 5490 IP67
 CONNECTIONS: RED - COMMON
 BLUE - NORMALLY OPEN
 YELLOW - NORMALLY CLOSED

CUSTOMER TO PROVIDE PROTECTIVE CONDUIT AND WIRE TERMINATIONS.

H	17-039	WIRE COLOURS UPDATED, RED WAS BLACK YELLOW WAS GREY 23/05/17 TF	MS
G	95-135	SWITCH MANUFACTURER & PART No REMOVED, RATING WAS MAX 3A ON 125 OR 250V AC 13.9.96 AD	
F	94-061	WEIGHT SETTING NOTE 4: '5 TURNS' WAS '10 TURNS' 27.6.94 CP	
E	94-021	DESIGN FIRM 2.3.94 CP	
ISS	D.C.N.	CHANGE DATE & SIGNATURES	
MATERIAL	MAT'L SPEC.	CODE IDENT.	
FINISH			
THREADS TO DIMENSIONS IN MILLIMETRES			ORIGINAL SCALE 1:5
DRN	C PRIESTLEY	DATE	10.11.93
CKD	J GRIFFIN	DATE	
APP. DESIGN	APP. PRODUCTION	APP. D.O.	
P WISEMAN		J GRIFFIN	

ALL BURRS TO BE REMOVED.
 GEOMETRIC SYMBOLS TO B.S.8888
 ALL STANDARDS ARE TO LATEST ISSUE

GENERAL TOLERANCES		NP:
LINEAR	ANGULAR	
2 DEC. +/- 0.13	+/- 1 DEGREE	
1 DEC. +/- 0.35		

DESCRIPTION	INSTALLATION OF WEIGHT INDICATOR MECHANISM	DRG. No.	E8731-402 ID
-------------	--	----------	--------------

Enquires: sales@norrscope.com