

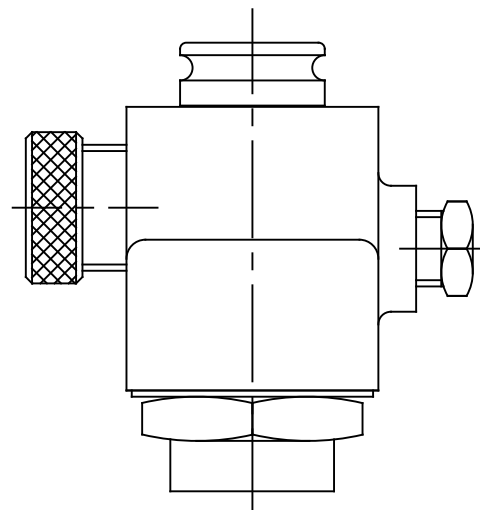
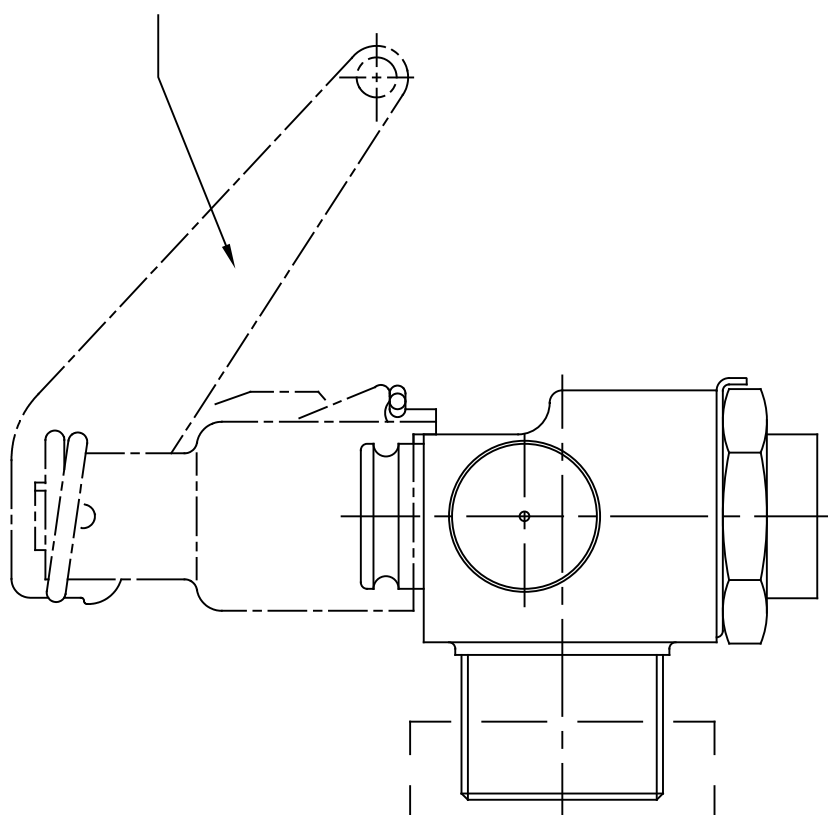
Drawn / Date
 TF 12/01/18

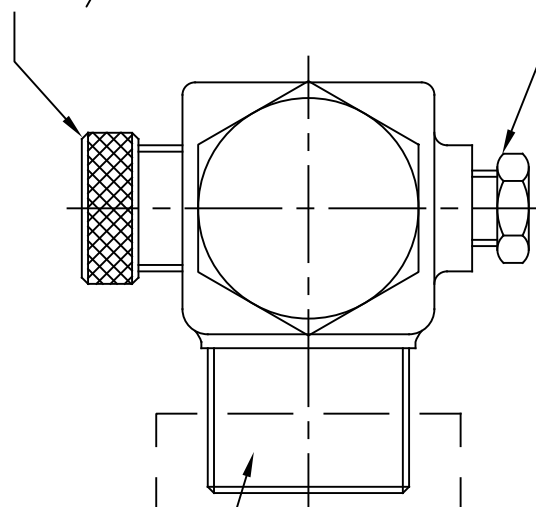
 App. by / Date
 MS 12/01/18

 Date of issue
 12/01/18

 Rev.
 A

 DCN
 18-004

 VALVE ACTUATOR
 SEE DATA SHEET DS K62341

 CO₂ OUTLET –
 W21.8 x 1/4"

 SAFETY
 OUTLET

 CYLINDER
 CONNECTION –
 1" NPT

DESCRIPTION

THE 'KLEM' CYLINDER VALVE IS A COMPACT, HORIZONTAL SERVO ASSISTED VALVE WHICH CAN BE OPERATED WHEN THE APPROPRIATE ACTUATOR IS FITTED, BY GAS PRESSURE OR MANUALLY BY A LEVER.

WORKING PRESSURE (MAX): – 140 BAR

SAFETY BURST DISC: – RUPTURES BETWEEN 179 AND 196 BAR