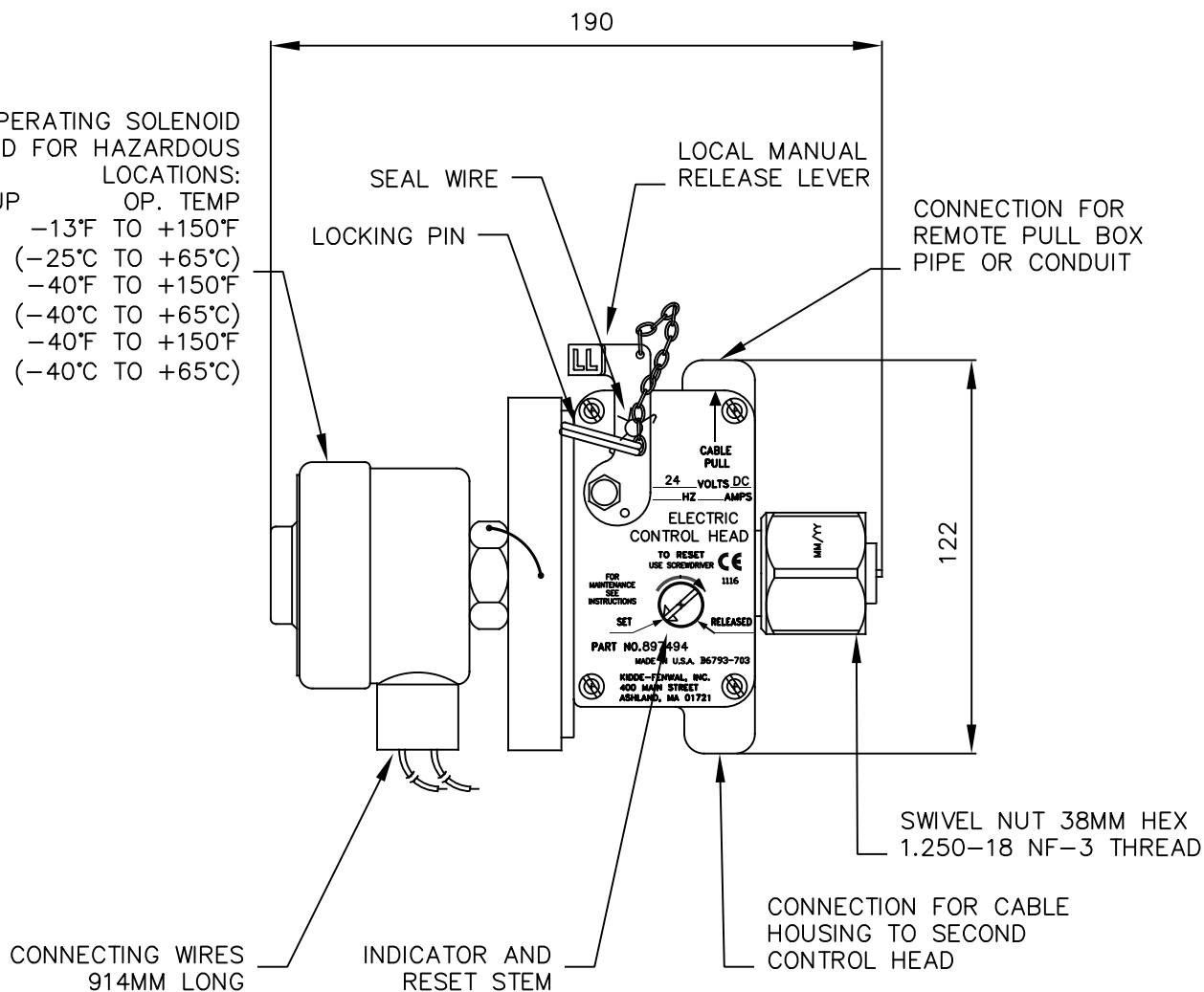
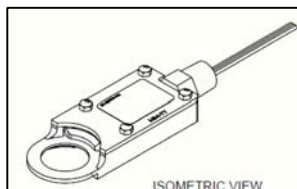


OPERATING SOLENOID
UL LISTED FOR HAZARDOUS
LOCATIONS:
CLASS GROUP OP. TEMP
I C -13°F TO +150°F
(-25°C TO +65°C)
I D -40°F TO +150°F
(-40°C TO +65°C)
II E,F,G -40°F TO +150°F
(-40°C TO +65°C)



OPTIONAL CONTROL HEAD MONITOR
SWITCH (85-100000-100) SEE BULLETIN
#15-50K



Flameproof electric/cable operated
control head

sales@norrscope.com

Part No B6793-703

ELECTRIC DATA: SUPPLY 24V DC
POWER CONSUMPTION 36.2 W
APPROXIMATE WEIGHT: 3.0kg

KF P/N 897494

ALL DIMENSIONS IN mm's UNLESS OTHERWISE STATED



6	12/10/16	CHM ADDED 16-069	M.S.
5	3/06/16	MARKING UPDATED	M.S.
7	4/10/17	CHM OPTIONAL 17-019	M.S.
REV	DATE	REASON FOR ISSUE	APP