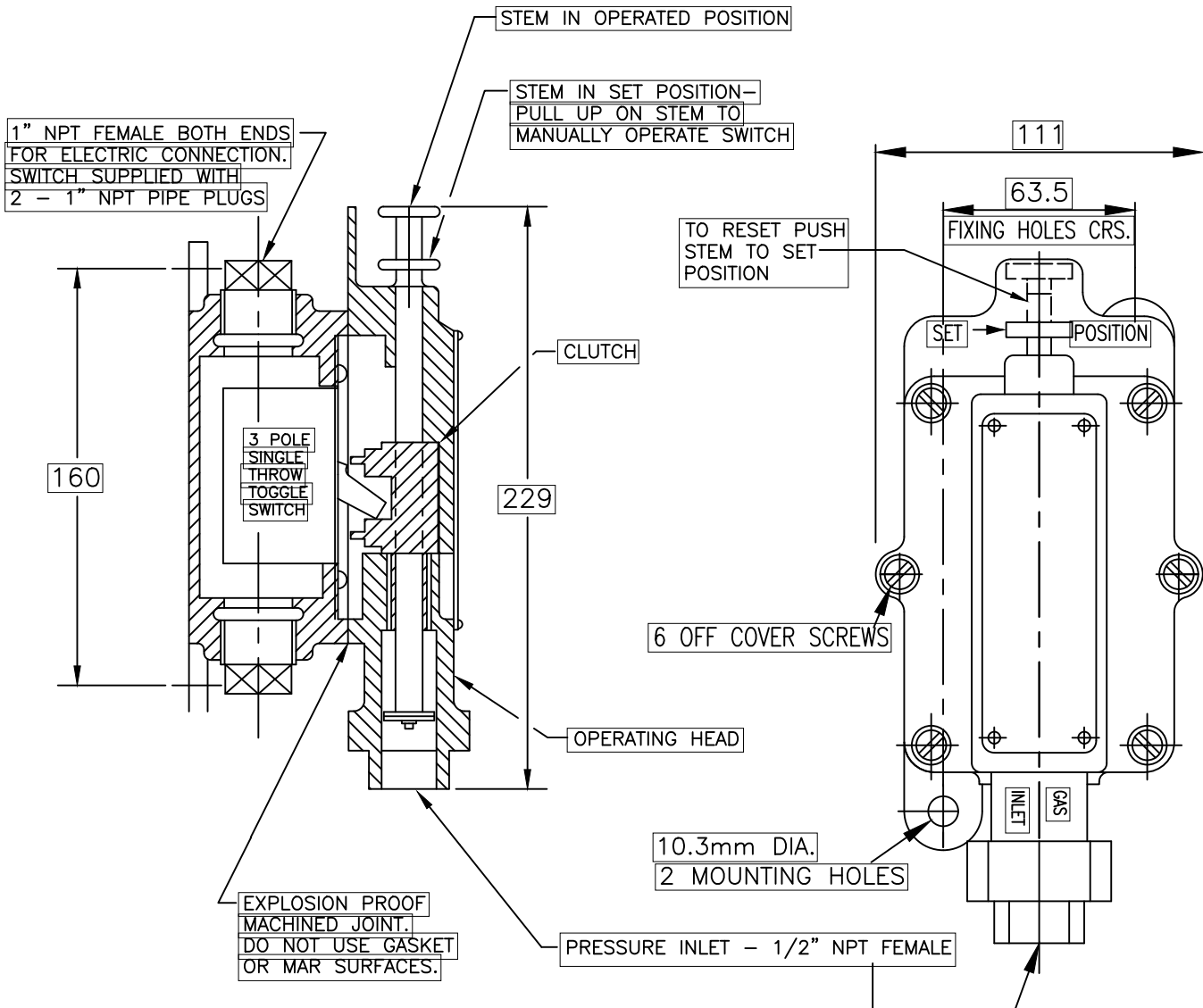


Drawn / Date	App. by / Date	Date of issue	Rev.	DCN
TF 21/05/24	MS 21/05/24	21/05/24	A	24-026



1. UL LISTED 472M SIGNAL SWITCH FOR USE IN HAZARDOUS LOCATIONS CLASS I GROUP D (NON ATEX)
2. 3 POLE SINGLE THROW SWITCH
 - 2.1. RATING - 30A @ 250V AC
 - 2.2. 20A @ 600V AC
 - 2.3. 2HP @ 110 - 600V 3 PHASE AC
3. MATERIAL - CAST BRONZE
4. TOGGLE SWITCH MAY BE MOUNTED IN BASE FOR EITHER N.O. TO N.C. OR N.C. TO N.O. CONTACT TRANSFER UPON OPERATION.
5. ANY LOAD CONNECTED TO THE SWITCH MUST NOT EXCEED THE SWITCH RATING AND SHALL UTILISE A SUITABLE PROTECTION DEVICE I.E. CIRCUIT BREAKER, FUSE ETC.
6. REMOVE OPERATING HEAD TO MAKE ELECTRICAL CONNECTIONS TO TOGGLE SWITCH. WHEN REPLACING OPERATING HEAD, ENSURE THAT TOGGLE ENGAGES CLUTCH. TIGHTEN COVER SCREWS SECURELY.
7. APPROXIMATE WEIGHT - 4.6KG
8. MULTI P/NS - 981332
 - 8.1. B6793-732
 - 8.2. 81-981332-000