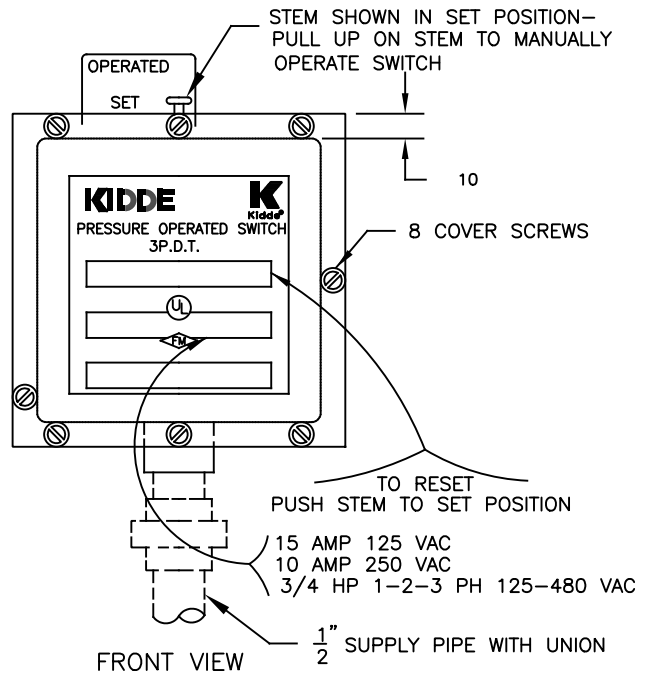
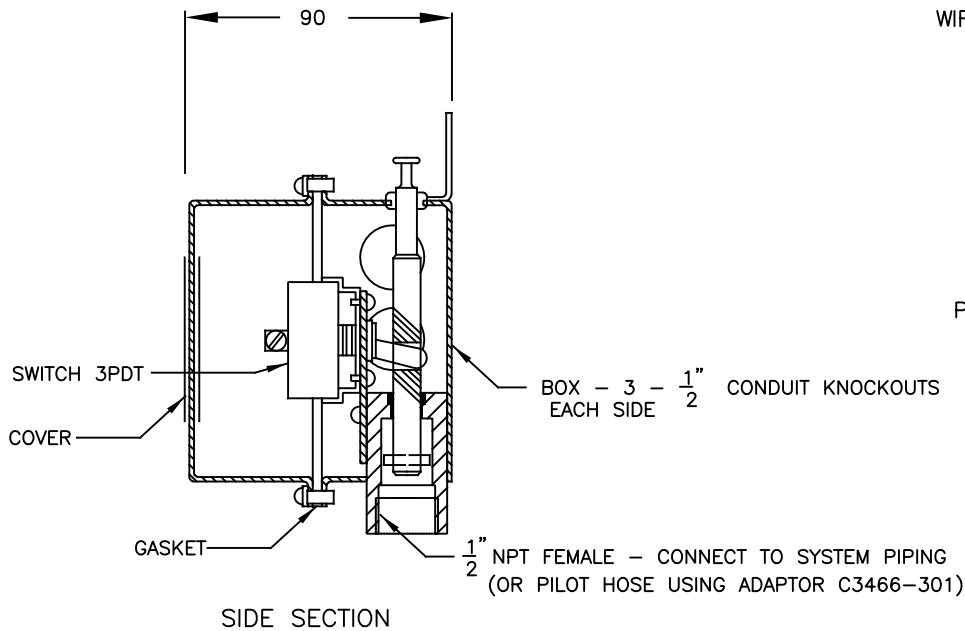


FRONT VIEW
COVER REMOVED

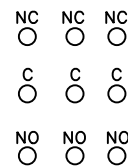


FRONT VIEW



SIDE SECTION

WIRING TERMINALS



↓
PRESSURE INLET

NOTES

- SWITCH MAY BE MOUNTED IN ANY POSITION BUT PREFERRED INSTALLATION IS UPRIGHT AS SHOWN.
- ANY LOAD CONNECTED TO THE SWITCH MUST NOT EXCEED SWITCH RATING AND SHALL UTILISE A SUITABLE PROTECTION DEVICE. (i.e. CIRCUIT BREAKER, FUSE).



APPROXIMATE WEIGHT: 1.0kg

ALL DIMENSIONS IN mm's UNLESS OTHERWISE STATED

A	31/05/18	FIRST ISSUE 18-038	M.S.
REV	DATE	REASON FOR ISSUE	APP

DESCRIPTION	
PRESSURE OPERATED SWITCH	
PART NO:	DS 486536

Kidde Fire Protection
1st Floor Stokenchurch House
Oxford Road, Stokenchurch
Buckinghamshire, HP14 3SX

NOVEC™ 1230
IND / MARINE

sales@norrscope.com