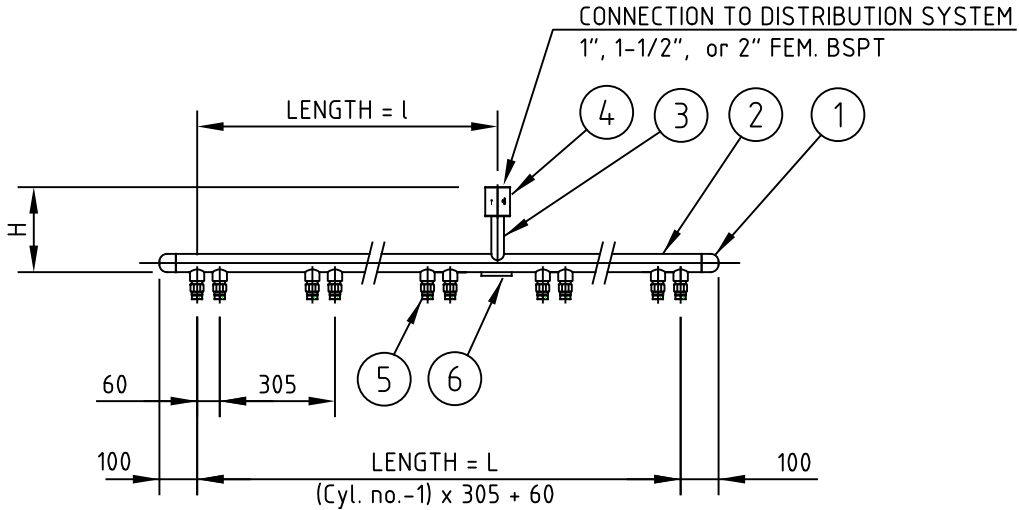


Drawn / Date MA 10/07/00	App. by / Date MS 6/04/16	Date of issue 05/06/19	Rev. 5	DCN 19-043
-----------------------------	------------------------------	---------------------------	-----------	---------------



ARTICLE NO.	CYLINDER	LENGTH	LENGTH	HEIGHT	OUTLET	RESTRICTOR	MANIFOLD	WEIGHT
	QTY.	L	l	H	SIZE	SIZE	SIZE	APPROX.
01-3506-3121	4	365	180	220	1"	1"	1-1/2"	6.0 kg
01-3506-3122	6	670	180	250	1-1/2"	1-1/2"	1-1/2"	10.0 kg
01-3506-3123	8	975	485	250	1-1/2"	1-1/2"	1-1/2"	12.0 kg
01-3506-3124	10	1280	485	250	1-1/2"	1-1/2"	1-1/2"	13.5 kg
01-3506-3125	12	1585	790	250	1-1/2"	1-1/2"	1-1/2"	16.0 kg
01-3506-3126	14	1890	790	250	1-1/2"	1-1/2"	1-1/2"	18.5 kg
01-3506-3127	16	2195	1095	250	2"	2"	2"	23.0 kg
01-3506-3128	18	2500	1095	250	2"	2"	2"	25.0 kg
01-3506-3129	20	2805	1400	250	2"	2"	2"	28.0 kg

**ZINC PLATED MILD STEEL**

- 1) ENDCAP: 1-1/2", or 2", SCH 160, A-53 B/A-106 B
- 2) MANIFOLD: 1-1/2" or 2", SCH 160, A-53 B/A-106 B
- 3) OUTLET: 1", 1-1/2" or 2", SCH XXS, A-53 B/A-106 B
- 4) RESTRICTOR: ORIFICE TO BE SPECIFIED AT ORDER: 1" 01-3700-3xxx or 1-1/2" 01-3700-4xxx or 2" 01-3700-5xxx
- 5) CHECK VALVE: BRASS 01-6454-0000, FOR CONNECTION TO HOSE
- 6) TEST PRESSURE SIGN

WORKING PRESSURE : 370 bar at 50°C  
 TEST PRESSURE : 555 bar

**sales@norrscope.com**